





( )

( )


( )

( )

1

SINOCHEM INTERNATIONAL CORPORATION  
SINOCHEM INTERNATIONAL

2

3

021 61048666 50475048

021 50470206

E-mail ir@sinochem.com

88 3 18

4

88 3 18

88 3 18

200121

<http://www.sinochemintl.com>

ir@sinochem.com

5

<http://www.sse.com.cn>

88 18

6

A

A

A 600500

7

1998 12 14

2007 7 14

310000000066961

310115710923539

71092353-9

222

30

( )

	876,726,028.00
	1,030,114,339.98
	705,774,404.35
	472,813,732.33
	1,680,700,631.28

( )

	-10,099,787.06
	0.00
	14,687,825.61
	0.00
	0.00
	0.00
	0.00
	0.00
	0.00
	0.00
	0.00
	0.00
	0.00
	0.00
	0.00
	143,146,354.19
	0.00
	6,682,337.49
	0.00
	0.00
	0.00
	136,448,999.19
	0.00
	-6,994,604.62
	-50,910,452.78
	232,960,672.02

( )

	2008	2007		(%)	2006
	27,401,770,110.02	19,409,559,276.87	19,409,559,276.87	41.18	15,459,028,361.75
	1,030,114,339.98	928,324,117.75	928,324,117.75	10.96	531,815,794.76
	705,774,404.35	629,135,829.20	629,135,829.20	12.18	361,471,063.71
	472,813,732.33	432,822,095.02	412,269,804.40	9.24	268,020,405.04
	0.49	0.50	0.50	-2.00	0.29
	0.49	0.46	0.46	6.52	0.29
	0.33	0.34	0.33	-2.94	0.21
%	13.23	10.95	10.95	2.28	11.43
%	11.82	18.50	18.50	6.68	12.24
%	8.86	7.53	7.18	1.33	8.47
%	7.92	12.73	12.13	4.81	8.96
	1,680,700,631.28	622,912,997.33	622,912,997.33	169.81	386,494,320.80
	1.17	0.43	0.43	172.09	0.31
	15,563,956,338.50	13,616,894,354.87	13,663,268,261.00	14.30	8,009,731,528.81
	5,333,503,667.49	5,745,313,735.47	5,745,313,735.47	-7.17	3,163,181,405.22
	3.71	4.00	4.00	-7.25	2.52

( )

1

		(%)							(%)
1									
2	742,673,700	51.66				-742,673,700	-742,673,700	0	0
3									
4									
	742,673,700	51.66				-742,673,700	-742,673,700	0	0
1	694,915,871	48.34				742,673,700	742,673,700	1,437,589,571	100.00
2									
3									
4									
	694,915,871	48.34				742,673,700	742,673,700	1,437,589,571	100.00
	1,437,589,571	100.00				0	0	1,437,589,571	100.00

2

	742,673,700	742,673,700	0	0		2008 8	12
	742,673,700	742,673,700	0	0	/	/	

( )

1

CWB1	2006 12 13	6.52	179,895,821	2006 12 18	180,000,000	2007 12 17

2006 136 2006 12 13

120,000 1,200 100

120,000 15

1.8

2006 12 18

06 126002 6 1.8%

2006 12 18 2012 12 1 2012 12 1

5 CWB1

580011 12 2006 12 18 2007 12

17 12 5 2007

12 11 17 1:1 6.52 /

6.52

2007 12 17 179,895,821 CWB1

CWB1 1,437,589,571

179,895,821

2

742,673,700

2008 8 12 1,437,589,571

3

( )

1

				133,364		
		(%)				
		55.76	801,550,153	4,744,595	0	
		0.84	12,100,000	12,100,000	0	
		0.54	7,829,010	0	0	
		0.44	6,290,679	6,290,679	0	
( )		0.40	5,799,857	3,799,857	0	
		0.39	5,669,287	2,325,004	0	
2		0.36	5,146,304	5,146,304	0	
		0.34	4,868,700	3,968,700	0	
		0.33	4,732,578	1,432,578	0	
300		0.32	4,583,563	681,504	0	
			801,550,153			
			12,100,000			
			7,829,010			
			6,290,679			
( )			5,799,857			
			5,669,287			
2			5,146,304			
			4,868,700			
			4,732,578			
300			4,583,563			
		10				
	2		10		10	10

2  
(1)

101.66

SINOCHEM

500

Á{6u6u ě á/Ä Ö P í @ ŽαÁ

( )

---

:

				17							
		38		2008 12 29 2010 12 17	0	0	0			0	
		51		2007 12 18 2010 12 17	0	0	0			85.00	
		38		2007 12 18 2008 9 4	1700	1700	0			87.73	
		44		2007 12 18 2010 12 17	0	0	0			123.50	
		38		2008 7 30 2010 12 17	0	2,600	2,600			68.00	
		41		2008 12 29 2010 12 17	6,000	18,200	12,200			0	
		34		2007 12 18 2010 12 17	0	0	0			70.50	
	/	/	/	/	106,500	141,500	35,000	/	/	1,248.79	/

1

2009 1

5

1. 2001 7 2004 1 2004  
1 2004 12 2004  
12

2. 2000 11 2003 11  
2003 12 2006 1 2006 1 2007 12

3. 2001 1

4. 2003 8 2004 9 2004 9

5. 2003 12 2005 2

6. 2001 2 2003 12

/ 2003 12  
2007 12

7. 2000 2006 2006

8. 2000

9. 2000 2004 3 2004 3



( )

			2004-12		
			2008-3		
			2002-08		
			2001-01		
			2005-08		
			2005-02		
			2000-12		
			2005-04		

**ALYA**

2004-04

**XO**

2004-

			2002-3		
			2002-1		
			2007-12		
			2003-1		
			2007-6		
			2004-6		
			2003-7		
			2001-9		
			2001-9		
			2004-3		
			1995-9		
			2007		
			2007		
			2007		
			2008-2		
			2009-4		
			2004-3		
			2005		
			2007-11		
			2008-4		
			2009-2		
			2008-6		
			2008-3		

( )

1

2

2008

2008

2007

2007

3


4

2007

2008

18

5

2008

(

)2008

(1) 2007

(2)

2008

2008

2009

( )

		6

1 2008 7 30

2 2008 12 26

( )

10,491 h

( )

1)

1

2)

9

4

2008

3)

3

2

1

4)

5)

6)

[2008]27

2007 9 2008 6

30

2007 11 DNV ISO9001

2007

2007

[2007]519

2008 4 3

3

6

2008

( )

1

	12	11	1	0	-
	12	12	0	0	-
	12	11	1	0	-
	12	11	1	0	-
	5	5	0	0	-

2

3

2008

1)

2008

2)

2008

2008 6

[2008]27

7

50%

50%

70%

3)

( )


( )

1 2  
3 4 5  
6 7 8 9  
10

( )

1  
2

( )

2007

2008

( )

2008

( )

2007	2008 4 29		2008 4 30

( )

1

2008

916 08 30 4 2,552 7.16

9 5 GMG 51%  
GMG 4.5

2008 6 1

9

11

09 4

53

EHS

EHS

08



( )

: :

		(%)
	1,699,576.55	39.36
	998,707.99	43.73
	41,892.47	58.04

3)

2007 2008

2008

	132,659.88	85,350.87	835.74	3,626.07	42,847.19	35.66%	25.12%
	660,158.72	624,796.46	8,842.14	205.51	26,314.61	3.99%	36.41%
	181,365.12	154,492.68	6,614.25	254.19	20,003.99	11.03%	15.58%
	1,195,343.28	1,076,314.82	20,638.42	68,175.09	30,214.94	2.53%	58.50%
	570,650.02	552,928.38	9,390.88	1,872.44	6,458.32	1.13%	-34.21%
	2,740,177.01	2,493,883.22	46,321.44	74,133.31	125,839.05	4.59%	26.19%

2007


3

1)

SINOCHEM INTERNATIONAL (OVERSEAS) PTE.,LTD.

2003 6

600

100%

				390,153.57	82,935.26
			1,257,682.86	29,343.84	
	GMG Global Ltd				
	1999		16,962		
	2008	9	5	51%	
198,962.73			143,872.15		39,667.22
	7,401.01				
2)					
	1994	1	177,900	100%	
410,470.01			203,575.41		78,558.83
	11,171.99				
	1994	3	61,100	25%	
			206,660.55		119,609.92
	6,597.41				
	1999	6	2,350	100%	
			14,770.50		4,448.93
7,730.50			75.06		
	(	)			
	1990	4	3,256.40	44.8%	
			89,935.59		62,351.56
25,205.13			13,298.26		
	2001	5	837.05	44.8%	
	41,764.89		25,984.95		12,052.15
8,005.60			)		
	2005	12	50,700	100%	
					63,398.62
56,563.40			12,167.99		3,067.55

	2006	11	10,000	60%	19,619.99
9,971.56			1,027.88	2.37	
3)					
	2004	12	6,000	46.5%	
			49%		
104,132.07			10,291.61	7,885.38	
			1,744.93		
	2005	9	9,000	96.67%	12,032.21
10,481.49			34,615.31	438.62	
	2001	8	14,500	80.06%	5,918.51
				41,878.76	
65,276.83			-5,039.47		
	2005	6	30,000	50.5%	63,367.30
PVC					
45,515.58			76,338.37	1,965.25	
	2007	12	6,000	60%	
			6,798.08	5,953.05	
20,805.89			-43.31		
4	2009				
	2009				
1)		2009			
			2009		
2)					

3) 2009

● 2009  
● EHS

●

●

●

5

292,397.68

10.67%





7

1)

1.	1,155.95	7,777.92	-	-	7,632.99
	1,155.95	7,777.92	-	-	7,632.99
2.	162,454.60	-	-112,994.95	-	61,503.86
	163,610.55	7,777.92	-112,994.95	-	69,136.85
	738.23	-2,946.20	-	-	2,946.20
	-	-	-	-	-
	-	-	-	-	-
	-	-	-	-	-
	163,610.55	7,777.92	-112,994.95	-	69,136.85

2)

1.	-	7,777.92	-	-	7,632.99
	-	7,777.92	-	-	7,632.99
2.	-	-	-	-	-
3.	-	-	-	-	-
4.	-	-	-	-	-
	-	7,777.92	-	-	7,632.99
	-	-	-	-	-
	-	2,916.70	-	-	2,916.70

( )

	8,672.09
	-176,564.30
(%)	-95.32

1					
1)	1999		94,139		94,139
2)	2006		118,200		118,200
	40,700				
3)	2007		115,503.81		95,300
	6,000	20,203.81			
	2006 12	12		118,200	2007
12		115,503.81	2008 12 31		
1)		53,500	2006 12	95%	
				40,700	2007 5
				59,300	2007 12
			2008 12 31		132,595
2)		24,000	2006 12	90%	
				24,000	2007 12
			2008 12 31		43,931
3)		6,000	2007 12		

2

		167,700	153,500		
		48,000	48,000		
		12,000	6,000		
		6,000	6,000		
	/	233,700	213,500	/	/



( )

1

	2008 1 11	1 2 3 4 2008 5 6 7 2007 8 9 07 10 2007 11 08		
	2008 4 3	1 2007 2 2007 3 2007 4 2007 5 2007 6 08 7 8 9 2008 10 11 2007 12 13 14		2008 4 8

		15		
		16		
		17		
		18		
		2007		
		19	285	
		6.38%		
	2008 4 25	1 2008 2008 2		2008 4 28
	2008 5 5	GMG Global Ltd (Singapore)51%		
	2008 5 12			2008 5 13
	2008 7 10			2008 7 11
	2008 7 18			2008 7 19
	2008 7 30			2008 7 31
	2008 9 3			2008 9 5
	2008 9 25			2008 9 27
	2008 10 29	2008		2008 10 31
	2008 12 26			2008 12 30

2

(1) 2007 2007 2007  
2007 2007 1,437,589,571  
10 1.5 215,638,435.65  
50.47% 211,638,340.82 2008 5 15 2007  
2008 5 20 2008 5 21  
2008 5 27 2008 5 15

(2) 2007

3

2008

5

2008

2009 1 7

2009 3 3

2008

(1)

(2)

(3)

2009 4 6

2008

1)

2)

2008

2008

4

3

2008

( )

			(%)
2005	440,192,812.50	711,506,916.85	61.87
2006	188,654,062.50	361,471,063.71	52.19
2007	215,638,435.65	629,135,829.20	34.28

( ) 2008

	2008	174,220,230.39	
427,276,776.47	2008	215,638,435.65	10%
17,422,023.04		368,436,548.17	
			2008
1,437,589,571	10	2	
287,517,914.2	78.04%	80,918,633.97	
	2008		

( )

1

2

(021)61048666

( )

2003 56

( ) (09) Q0050

2008 12 31

( )  
2008

5

	3	2008	4	3
			3	
25	3	2008	4	
			3	2008
30	3	2008	7	
			3	2008
6	3	2008	10	
			3	
29	3	2008	10	
			3	2008

( )

( )

( )

2007 12

115,503.81

( )

SINOCHEMINTERNATIONAL (OVERSEAS) PTE., LTD.

GMG Global Ltd 51%

( )

2008

( )

( )

( )

1

			(%)					
600389		52,390.66	29.19	61,568.53	8,347.40	0.00		
601328		14,584.99	0.39	48,671.67	2,567.07	111,718.95		
600596		506.24	0.09	781.81	427.63	1,276.00		
GGL1	GMG	128,043.87	51	128,043.87	3,774.52	0.00		
		195,525.76	/	239,065.88	15,116.62	112,994.95	/	/

2

			/			
		55,440,000	2,349,418	57,789,418	22,338,367.99	223,605.67
	GMG	0	1,030,508,519	1,030,508,519	1,280,438,701.24	37,745,168.67
		307,460	58,000	249,460	0.00	4,126,633.82

( )

1

2008 7 11

GMG Global Ltd51%

SINOCHEM INTERNATIONAL (OVERSEAS)

PTE., LTD.

GMG Global Ltd

GMG  
1,030,508,519

0.26 /  
2,020,604,940 51

GMG  
2.6798

<http://www.sse.com.cn>

2008 9 5

GMG Global Ltd 51%

GMG Global

Ltd

51

GMG Global Ltd

2008

9 5

<http://www.sse.com.cn>

2

25%

19%

19%

	<u>567,888,571.43</u>	<u>446,296,027.19</u>
	150,526,142.89	3,199,561.78
	732,743.36	-
	<u>78,681,321.17</u>	<u>12,582,759.67</u>
	<u><u>797,828,778.85</u></u>	<u><u>462,078,348.64</u></u>

15,149.70

10,515.54

0.43%                      4,634.16

0.17%

(2)

	<u>581,847.70</u>	<u>637,365.40</u>
	10,517,694.00	-
	<u>11,099,541.70</u>	<u>637,365.40</u>

-

-

-                      (     )

-

	25,768,918.64	20,483,965.32
	<u>705,196.57</u>	-
	<u><u>26,474,115.21</u></u>	<u><u>20,483,965.32</u></u>



	( )	358,129.00	265,843.04
		1,782,510.16	50,425,361.98
		<u>2,140,639.16</u>	<u>50,691,205.02</u>
	( )	6,216,765.24	5,423,428.89
		111,072.75	3,889,125.05
		<u>6,327,837.99</u>	<u>9,312,553.94</u>
		24,885,225.84	1,813,939.78
		828,000.00	-
		<u>757,536.00</u>	<u>1,321,257.16</u>
		<u>26,470,761.84</u>	<u>3,135,196.94</u>
		674,494.23	674,494.23
		<u>1,224,442.60</u>	<u>1,224,442.60</u>
		<u>1,898,936.83</u>	<u>1,898,936.83</u>
		20,000,000.00	-
		<u>2,192,825.29</u>	<u>9,557,408.91</u>
		<u>22,192,825.29</u>	<u>9,557,408.91</u>
		-	137,505,985.36
		-	20,000,000.00
		<u>5,704,781.75</u>	<u>30,869.70</u>
		<u>5,704,781.75</u>	<u>157,536,855.06</u>

-	100,000,000.00
2,000,000.00	2,000,000.00
16,099,235.02	-
18,099,235.02	2,000,000.00
-	19,201,993.98

32,272,493.92

( )

1

(1)

(2)

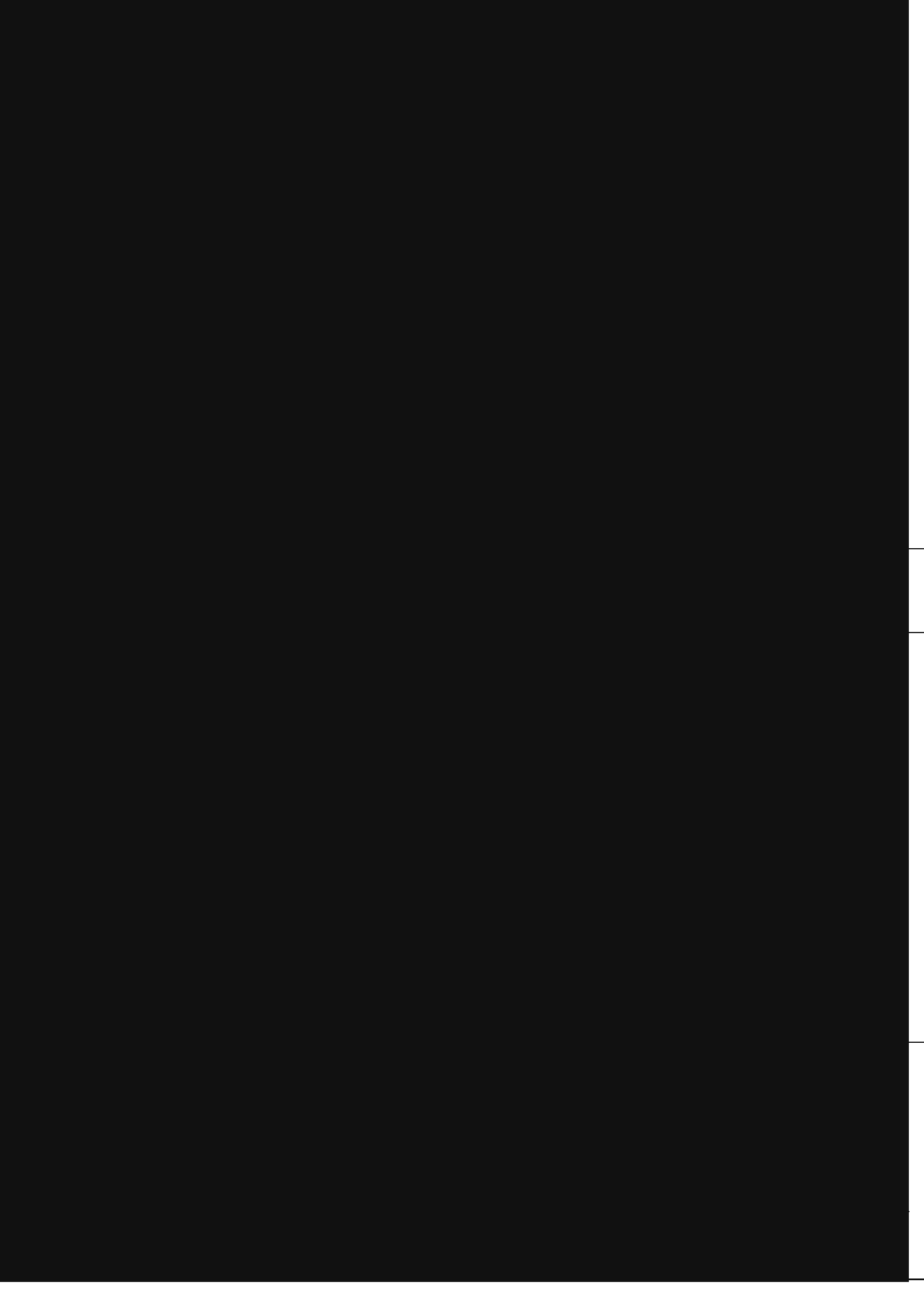
(3)

2

	22,000.00
A	22,000.00
	222,515.46
B	222,515.46
A+B	244,515.46
(%)	45.84
C	-
70	-
D	-
50 E	-
C+D+E	-

2.2

1.7



(2)

1	117,578	34,141
2	104,869	32,564
3	77,925	22,806
	<u>541,626</u>	<u>-</u>
	<u>841,998</u>	<u>89,511</u>

( )

285 ( )

4

300 ( )

)

5

( )

( )

( )

	B04 D9 C8	2008 2 19	<a href="http://www.sinochemintl.com">http://www.sinochemintl.com</a> <a href="http://www.sse.com.cn">http://www.sse.com.cn</a>
	D126 D144 C37	2008 3 27	<a href="http://www.sinochemintl.com">http://www.sinochemintl.com</a> <a href="http://www.sse.com.cn">http://www.sse.com.cn</a>
2007	D027 D24 C21	2008 4 8	<a href="http://www.sinochemintl.com">http://www.sinochemintl.com</a> <a href="http://www.sse.com.cn">http://www.sse.com.cn</a>
	D027 D24 C21	2008 4 8	<a href="http://www.sinochemintl.com">http://www.sinochemintl.com</a> <a href="http://www.sse.com.cn">http://www.sse.com.cn</a>
	D027	2008 4 8	

	D24 C21			<a href="http://www.sinochemintl.com">http://www.sinochemintl.com</a> <a href="http://www.sse.com.cn">http://www.sse.com.cn</a>
2007	D027 D24 C21	2008	4 8	<a href="http://www.sinochemintl.com">http://www.sinochemintl.com</a> <a href="http://www.sse.com.cn">http://www.sse.com.cn</a>
2008	D041 A30 C36	2008	4 28	<a href="http://www.sinochemintl.com">http://www.sinochemintl.com</a> <a href="http://www.sse.com.cn">http://www.sse.com.cn</a>
OO	A04 A169 C96	2008	4 30	<a href="http://www.sinochemintl.com">http://www.sinochemintl.com</a> <a href="http://www.sse.com.cn">http://www.sse.com.cn</a>
	D004 D14 C17	2008	5 13	<a href="http://www.sinochemintl.com">http://www.sinochemintl.com</a> <a href="http://www.sse.com.cn">http://www.sse.com.cn</a>
2007	A08 D16 C13	2008	5 15	<a href="http://www.sinochemintl.com">http://www.sinochemintl.com</a> <a href="http://www.sse.com.cn">http://www.sse.com.cn</a>
	B05 D11 C7	2008	5 20	<a href="http://www.sinochemintl.com">http://www.sinochemintl.com</a> <a href="http://www.sse.com.cn">http://www.sse.com.cn</a>
2008	D024 D22 D21	2008	7 1	<a href="http://www.sinochemintl.com">http://www.sinochemintl.com</a> <a href="http://www.sse.com.cn">http://www.sse.com.cn</a>
	D024 D005 C6	2008	7 11	<a href="http://www.sinochemintl.com">http://www.sinochemintl.com</a> <a href="http://www.sse.com.cn">http://www.sse.com.cn</a>
GMG Global Ltd 51%	D024 D005 C6	2008	7 11	<a href="http://www.sinochemintl.com">http://www.sinochemintl.com</a> <a href="http://www.sse.com.cn">http://www.sse.com.cn</a>
	D024 69	2008	7 19	<a href="http://www.sinochemintl.com">http://www.sinochemintl.com</a> <a href="http://www.sse.com.cn">http://www.sse.com.cn</a>
2008	D024 C20	2008	7 31	<a href="http://www.sinochemintl.com">http://www.sinochemintl.com</a> <a href="http://www.sse.com.cn">http://www.sse.com.cn</a>
	D024 C20	2008	7 31	<a href="http://www.sinochemintl.com">http://www.sinochemintl.com</a> <a href="http://www.sse.com.cn">http://www.sse.com.cn</a>

D024  
2008 7 31 <http://www.sinochemintl.com>  
C20 <http://www.sse.com.cn> ã  
A·E

	C16		<a href="http://www.sinochemintl.com">http://www.sinochemintl.com</a> <a href="http://www.sse.com.cn">http://www.sse.com.cn</a>
	D024 C3	2008 9 5	<a href="http://www.sinochemintl.com">http://www.sinochemintl.com</a> <a href="http://www.sse.com.cn">http://www.sse.com.cn</a>
GMG Global Ltd(Singapore)51%	D024 C3	2008 9 5	<a href="http://www.sinochemintl.com">http://www.sinochemintl.com</a> <a href="http://www.sse.com.cn">http://www.sse.com.cn</a>
	D024 28	2008 9 27	<a href="http://www.sinochemintl.com">http://www.sinochemintl.com</a> <a href="http://www.sse.com.cn">http://www.sse.com.cn</a>
	D024 28	2008 9 27	<a href="http://www.sinochemintl.com">http://www.sinochemintl.com</a> <a href="http://www.sse.com.cn">http://www.sse.com.cn</a>
	D024 C9	2008 10 8	<a href="http://www.sinochemintl.com">http://www.sinochemintl.com</a> <a href="http://www.sse.com.cn">http://www.sse.com.cn</a>
2008	D007 C24 D12	2008 10 31	<a href="http://www.sinochemintl.com">http://www.sinochemintl.com</a> <a href="http://www.sse.com.cn">http://www.sse.com.cn</a>
	D024 C12	2008 11 5	<a href="http://www.sinochemintl.com">http://www.sinochemintl.com</a> <a href="http://www.sse.com.cn">http://www.sse.com.cn</a>
06	D024 B08 C8	2008 11 25	<a href="http://www.sinochemintl.com">http://www.sinochemintl.com</a> <a href="http://www.sse.com.cn">http://www.sse.com.cn</a>
06 (126002)	D024 C20	2008 11 28	<a href="http://www.sinochemintl.com">http://www.sinochemintl.com</a> <a href="http://www.sse.com.cn">http://www.sse.com.cn</a>
	D024 D02 C24	2008 12 30	<a href="http://www.sinochemintl.com">http://www.sinochemintl.com</a> <a href="http://www.sse.com.cn">http://www.sse.com.cn</a>

( )

( ) (09) P0389

( )

2008 12 31

( )

2008 ( “ ”)

å € ,• Á#] Ý Ã uAu ã ‹ , "" î =ÀEÿ•AÍÔÂ@t œÁa!MÄÄAx tß a!ÜL €@à%ßla!ÜL €@à%Ò+Æ ÄÄAx ]÷`

1	3,488,663,831.01	2,213,468,232.76	1,973,896,370.08	920,964,007.74
2	76,329,918.48	11,559,549.14	8,184,000.00	11,559,549.14
3	124,201,470.82	146,832,758.16	107,285,619.41	88,799,370.56
4	866,493,023.90	1,184,195,812.51	458,618,268.46	516,629,008.88
5	323,129,800.39	876,317,610.73	440,846,641.62	1,105,648,004.28
6	18,099,235.02	8,233,958.21	10,600,100.00	349,196,466.46
7	187,639,546.54	198,212,242.03	146,774,481.59	267,001,516.81
8	1,168,035,679.88	1,867,475,204.99	673,846,189.52	1,398,977,793.12
9	100,000,000.00	-	100,000,000.00	-
	<u>6,352,592,506.04</u>	<u>6,506,295,368.53</u>	<u>3,920,051,670.68</u>	<u>4,658,775,716.99</u>
10	515,038,609.10	1,624,545,984.90	515,038,609.10	1,624,545,984.90
11	1,253,943,132.45	1,186,566,056.26	3,929,184,844.90	3,830,047,367.16
12	4,333,188,840.41	3,213,775,793.01	18,915,946.68	23,441,980.45
13	993,210,868.99	901,650,381.60	-	-
14	4,304,757.81	7,781,116.98	-	-
15	489,094,536.42	4,265,268.83	-	-
16	1,055,346,033.32	164,733,476.93	66,886,355.69	9,998,710.60
17	565,789,984.52	5,782,764.95	-	-
18	1,447,069.44	1,498,142.88	-	-
	<u>9,211,363,832.46</u>	<u>7,110,598,986.34</u>	<u>4,530,025,756.37</u>	<u>5,488,034,043.11</u>
	<u>15,563,956,338.50</u>	<u>13,616,894,354.87</u>	<u>8,450,077,427.05</u>	<u>10,146,809,760.10</u>

X T 7 Ô 1 ) } R 7 Ó Ô Ó

MéLl&fP\$Scuf%cVeW5pVY•fl—Dq50@È@sRg&5b2RuEbFcd5uLacpT R#”geQcf5Vd@“3F&R&7&1bbbbbbfA)jCM2Ö  
aT-nRf-FhRV\$9i6VHR7EaTivpWQV5•7by-Sc@“3EG82fabbbbbbbfbbbbbfrbbbbbbfF@huC—ED4mD  
20 2,658,636,228.68 1,557,846,844.07 1,217,791,301.39 643,990,738.52

2008 12 31

---

34	1,437,589,571.00	1,437,589,571.00	1,437,589,571.00	1,437,589,571.00
35	1,711,461,168.53	2,557,002,675.39	1,700,101,212.41	2,547,589,512.23
36	431,979,720.12	414,557,697.08	431,979,720.12	414,557,697.08
37	1,863,475,925.78	1,390,761,980.12	368,436,548.17	427,276,776.47
	(111,002,717.94)	(54,598,188.12)	-	-
	<u>5,333,503,667.49</u>	<u>5,745,313,735.47</u>	<u>3,938,107,051.70</u>	<u>4,827,013,556.78</u>
38	1,954,440,710.32	801,578,687.92	-	-
	<u>7,287,944,377.81</u>	<u>6,546,892,423.39</u>	<u>3,938,107,051.70</u>	<u>4,827,013,556.78</u>
	<u>15,563,956,338.50</u>	<u>13,616,894,354.87</u>	<u>8,450,077,427.05</u>	<u>10,146,809,760.10</u>

---

3 95

( )

2008 12 31

39	27,401,770,110.02	19,409,559,276.87	16,459,593,333.98	11,736,719,887.35
40	24,938,832,186.28	17,918,436,306.16	15,371,833,611.87	11,053,669,395.18
41	741,333,081.91	144,1846,7,13E		

	30,336,773,686.81	22,107,086,441.50	18,543,488,417.93	13,666,037,658.95
	44,801,440.90	68,639,455.02	36,431,615.29	59,762,364.76
55	297,163,706.44	142,027,137.37	608,851,137.13	815,663,979.91
	30,678,738,834.15	22,317,753,033.89	19,188,771,170.35	14,541,464,003.62
	26,543,089,498.00	20,732,346,885.26	16,285,597,730.49	13,160,553,925.17
	333,541,406.43	217,897,070.15	180,149,651.97	113,298,790.46
	1,695,399,364.35	348,260,731.07	1,524,597,311.00	186,866,762.80
55	426,007,934.09	396,335,350.08	791,530,709.32	550,005,981.92
	28,998,038,202.87	21,694,840,036.56	18,781,875,402.78	14,010,725,460.35
54	1,680,700,631.28	622,912,997.33	406,895,767.57	530,738,543.27
	512,217,372.03	32,279,742.95	512,217,372.03	32,279,742.95
	146,544,688.22	303,685,028.62	508,785,734.99	317,992,948.30
	28,306,613.23	179,781,011.65	8,682,505.44	-
	-	1.00	5,716,363.32	1.00
56	20,000,000.00	10,000,000.00	20,000,000.00	10,000,000.00
	707,068,673.48	525,745,784.22	1,055,401,975.78	360,272,692.25
	1,616,846,709.46	1,580,520,733.01	73,926,016.34	9,382,295.50
	848,211,515.35	724,320,820.25	909,802,167.99	1,927,426,589.48
58	1,086,498,346.36	17,714,336.20	-	-
	76,012.38	-	76,012.38	-
	3,551,632,583.55	2,322,555,889.46	983,804,196.71	1,936,808,884.98
	(2,844,563,910.07)	(1,796,810,105.24)	71,597,779.07	(1,576,536,192.73)

( )

( )

2008 12 31

		1,470,000.00	1,216,920,752.92	-	1,172,920,752.92
		1,470,000.00	44,000,000.00	-	-
		13,331,763,711.73	3,778,906,503.32	2,597,417,823.17	2,451,678,961.24
57		-	151,157,199.04	-	-
		13,333,233,711.73	5,146,984,455.28	2,597,417,823.17	3,624,599,714.16
		10,729,463,939.52	2,248,347,624.55	2,023,617,260.30	1,874,965,933.16
		464,936,049.03	321,246,753.58	281,099,090.30	246,952,496.18
		22,333,307.78	18,289,763.64	-	-
57		-	150,000,000.00	-	-
		11,194,399,988.55	2,719,594,378.13	2,304,716,350.60	2,121,918,429.34
		2,138,833,723.18	2,427,390,077.15	292,701,472.57	1,502,681,284.82
		30,487,810.73	(37,791,264.75)	-	-
		1,005,458,255.12	1,215,701,704.49	771,195,019.21	456,883,635.36
53		2,021,468,232.76	805,766,528.27	920,964,007.74	464,080,372.38
53		3,026,926,487.88	2,021,468,232.76	1,692,159,026.95	920,964,007.74

( )

---

2008 12 31

---

( )

2007 12 31

2006	12	31	1,257,693,750.00	389,785,926.23	521,398,817.32	879,881,249.94	(16,806,923.37)	663,055,411.00	3,695,008,231.12	1,257,693,750.00	389,785,926.23	521,398,817.32	889,280,604.85	3,058,159,098.40
			-	167,670,741.86	(163,802,554.32)	127,360,397.56	-	167,475.25	131,396,060.35	-	154,070,341.25	(163,802,554.32)	(786,002,672.61)	(795,734,885.68)
2007	1	1	1,257,693,750.00	557,456,668.09	357,596,263.00	1,007,241,647.50	(16,806,923.37)	663,222,886.25	3,826,404,291.47	1,257,693,750.00	543,856,267.48	357,596,263.00	103,277,932.24	2,262,424,212.72
			179,895,821.00	1,999,546,007.30	56,961,434.08	383,520,332.62	(37,791,264.75)	138,355,801.67	2,720,488,131.92	179,895,821.00	2,003,733,244.75	56,961,434.08	323,998,844.23	2,564,589,344.06
( )			-	-	-	629,135,829.20	-	140,839,298.12	769,975,127.32	-	-	-	569,614,340.81	569,614,340.81
( )			-	1,024,403,695.38	-	-	(37,791,264.75)	(25,964,266.08)	960,648,164.55	-	1,028,590,932.83	-	-	1,028,590,932.83
1.			-	1,396,894,695.23	-	-	-	-	1,396,894,695.23	-	1,396,894,695.23	-	-	1,396,894,695.23
2.			-	-	-	-	-	-	-	-	-	-	-	-
3.			-	-	-	-	-	-	-	-	-	-	-	-
4.			-	(368,332,432.03)	-	-	-	-	(368,332,432.03)	-	(368,332,432.03)	-	-	(368,332,432.03)
			-	(4,158,567.82)	-	-	(37,791,264.75)	(25,964,266.08)	(67,914,098.65)	-	28,669.63	-	-	28,669.63
( ) ( )			-	1,024,403,695.38	-	629,135,829.20	(37,791,264.75)	114,875,032.04	1,730,623,291.87	-	1,028,590,932.83	-	569,614,340.81	1,598,205,273.64
( )			179,895,821.00	975,142,311.92	-	-	-	56,000,000.00	1,211,038,132.92	179,895,821.00	975,142,311.92	-	-	1,155,038,132.92
1.			179,895,821.00	975,142,311.92	-	-	-	56,000,000.00	1,211,038,132.92	179,895,821.00	975,142,311.92	-	-	1,155,038,132.92
2.			-	-	-	-	-	-	-	-	-	-	-	-
3.			-	-	-	-	-	-	-	-	-	-	-	-
( )			-	-	56,961,434.08	(245,615,496.58)	-	(32,519,230.37)	(221,173,292.87)	-	-	56,961,434.08	(245,615,496.58)	(188,654,062.50)
1.			-	-	56,961,434.08	(56,961,434.08)	-	-	-	-	-	56,961,434.08	(56,961,434.08)	-
2.	( )		-	-	-	(188,654,062.50)	-	(32,519,230.37)	(221,173,292.87)	-	-	-	(188,654,062.50)	(188,654,062.50)
3.			-	-	-	-	-	-	-	-	-	-	-	-
( )			-	-	-	-	-	-	-	-	-	-	-	-
1.	( )		-	-	-	-	-	-	-	-	-	-	-	-
2.	( )		-	-	-	-	-	-	-	-	-	-	-	-
3.			-	-	-	-	-	-	-	-	-	-	-	-
4.			-	-	-	-	-	-	-	-	-	-	-	-
2007	12	31	1,437,589,571.00	2,557,002,675.39	414,557,697.08	1,390,761,980.12	(54,598,188.12)	801,578,687.92	6,546,892,423.39	1,437,589,571.00	2,547,589,512.23	414,557,697.08	427,276,776.47	4,827,013,556.78

( )

2008 12 31

( ) ( “ ’ ” )  
( “ ” )  
( )  
1998 12 14  
25,265 (1999)155  
1999 12 21 12,000  
1999 12 28 37,265  
2000 3 1  
2001 7 2002 9  
10 5 55,897.5 2004 4 26  
2003 10 2 3  
83,846.25 2005 4 26 2004  
10 2 3  
125,769.375  
2005 6 19  
2005 7 20 8 5  
2005 2005 8 10 ( 1.75  
) 10 2006 12 1  
5.58 2005 8 12 18,000  
12,000 2007 12 17  
179,895,821 143,758.9571  
( “ ” )  
“ ”  
( )  
( )

( )

---

2006 2 15

15

(2007 )

2006 2 15 ( )  
2008 12 31

2008 )

---

\_\_\_\_\_ ( )

5.

(2)

( )

(1)

(3)

)

(

“ ”

6.

7.

\_\_\_\_\_ ( ) \_\_\_\_\_

7.

7.1. \_\_\_\_\_

(1)

(2)

(3)

(1)

(2)

7.2. \_\_\_\_\_

( )

( )

\_\_\_\_\_ ( ) \_\_\_\_\_

7.

7.3. \_\_\_\_\_

7.4. \_\_\_\_\_

8.

- (1)
- (2)
- (3)
- (4)
- (5)
- (6)

—

—

(7)

(8)

(9)

( )

---

8.

( )

-

-

9.

(2)  
(3)

(1)

10.

( )

---

10.

11.

12.

\_\_\_\_\_ ( ) \_\_\_\_\_

12.

12.1. \_\_\_\_\_

( )

12.

12.3.

2008 8 7

)

(

12.4.

13.

	10-30	3%-5%	3.17	9.7%
	5-15	3%-5%	6.33	19.4%
	8	3%-5%	11.88	12.12%
	15-25	3%-5%	3.80	6.47%
	5-25	3%-5%	3.80	19.4%
	2-5	3%-5%	19.00	48.5%

\_\_\_\_\_ ( ) \_\_\_\_\_

14.

15.

\_\_\_\_\_

\_\_\_\_\_ 25

\_\_\_\_\_ -

\_\_\_\_\_ 4.0%

16.

( )

---

17.

- (1)
- (2)
- (3)
- (4)
- (5)

18.

19.

( )

---

19.

20.

20.1.

---

20.2.

---

20.3.

---

( )

---

21.

22.

23.

( )

24.

(2)

(3)

(1)

\_\_\_\_\_ ( )

24.

24.1. \_\_\_\_\_

( )

25.

)” “ (

“ ( )” “

26.

27.

( )

\_\_\_\_\_ ( ) \_\_\_\_\_

28.

28.1. \_\_\_\_\_

28.2. \_\_\_\_\_

(3) (1) (4) (2)

28.3. \_\_\_\_\_

28.4. \_\_\_\_\_

29.

\_\_\_\_\_ ( )

29.

30.

3

31.

31.1. \_\_\_\_\_

( )

( )

31.2. \_\_\_\_\_

\_\_\_\_\_ ( )

31.

31.2. \_\_\_\_\_

( )

( )

31.3. \_\_\_\_\_

31.4. \_\_\_\_\_

\_\_\_\_\_ ( ) \_\_\_\_\_

32.

32.1. \_\_\_\_\_

( )

32.2. \_\_\_\_\_

\_\_\_\_\_ ( ) \_\_\_\_\_

33.

33.1. \_\_\_\_\_

33.2. \_\_\_\_\_

34.

“ ” “ ”

( )

---

35.

“ ”

“ ”

36.

-

---

(8)

( )

---

-

---

(13)

---

(15)

---

(16)

---

(16)2

GMG GLOBAL LTD.

50

GMG GLOBAL LTD.

GMG

GLOBAL LTD.

---

( )

17% 13%

2008 1 1 18%

18% 2008 2012 5 25%

(1996)42 ( )

2012 5 ( [2007]39 ) 2008  
25% 18%

[2002]114 [2002]12  
( )

2008

2008 9%

2006 2008 2009 2010 [2006]600  
[2008]75 ) 2008 (

2008 1 1 18%

( )

\_\_\_\_\_

[2007] 47

2007

2008

SINOCHEM INTERNATIONAL FZE  
ALI FREE ZONE

JEBEL

SINOCHEM INTERNATIONAL (OVERSEAS) PTE., LTD.

Global Trader Programme

2004

10

1

10%

2008

10%

2008

27%

EUROMA RUBBER INDUSTRIES SENDIRIAN BERHAD

2008

27%

GMG GLOBAL LTD.

2008

18% GMG GLOBAL LTD.

25%

\_\_\_\_\_

\_\_\_\_\_

5%

3%

( )

		( 5)	( 5)		
( )	( 1)	3256.40	12599	44.8%	70%
( )	( 1)	837.05	3104	44.8%	70%
<hr/>					
EUROMA RUBBER INDUSTRIES		14500	11608	80.06%	80.06%
SENDIRIAN BERHAD		2000	327	75%	75%
<hr/>					
( 3)		177900	179108	100%	100%
( 4)		2350	2485	100%	100%
SINOCHEM INTERNATIONAL		50	50	100%	100%
(OVERSEAS) PTE. LTD.		600	600	100%	100%
( 4)		22	11.22	51%	51%
p=°qp	490 p=°qp	500	490	98%	98%

( )

1.

			2,060,163.86			187,780.29
			247,234.23			187,780.29
6,612.69	6.8346		45,195.09			-
93,615,869.70	0.0147		1,376,153.28			-
19,443,369.90	0.0147		285,817.54			-
128,053,678.90	0.0006		76,832.21			-
6,087.00	4.7530		28,931.51			-
			3,024,309,776.41			2,021,280,452.47
			2,450,242,476.19			1,749,294,411.66
57,128,906.36	6.8346	390,453,223.41	36,048,257.78	7.3046	263,318,103.78	
4,119,728.55	9.6590	39,792,458.06	658,379.01	10.6669	7,022,863.06	
34.66	9.8798	342.43	66.61	14.5807	971.22	
5,751,739,626.67	0.0147	84,550,572.51			-	
2,150,272,018.33	0.0147	31,608,998.67			-	
3,477,580,643.74	0.0006	2,086,548.39			-	
103,778,508.99	0.1406	14,591,258.36			-	
59,669,058.87	0.1440	8,592,344.48			-	
571,733.52	1.9733	1,128,201.76	652,825.72	2.2827	1,490,205.27	
265,801.00	4.7530	1,263,352.15	30,463.89	5.0518	153,897.48	
			462,293,890.74			192,000,000.00
			462,247,081.80			192,000,000.00
6,848.82	6.8346	46,808.94				-
			<u>3,488,663,831.01</u>			<u>2,213,468,232.76</u>
					30,000,000.00	(
42,000,000.00	)					281,690,534.19
(	0	)	6,848.82	(	0	)
150,000,000.00	(		150,000,000.00	)		
20,000,000.00	(		20,000,000.00	)		(29)

( )

2.

	( 1)					8,969,566.92		11,559,549.14
		( 2)				67,360,351.56		-
						<u>76,329,918.48</u>		<u>11,559,549.14</u>

1

2008

2

2008

3.

						<u>124,201,470.82</u>		<u>146,832,758.16</u>
--	--	--	--	--	--	-----------------------	--	-----------------------

4.

		%					%		
1	867,281,445.54	97.81	3,274,711.70	864,006,733.84	1,186,123,629.86	96.96	4,365,240.72	1,181,758,389.14	
1 2	2,577,648.88	0.29	308,453.11	2,269,195.77	1,933,478.64	0.16	32,961.03	1,900,517.61	
2 3	120,103.57	0.01	24,020.71	96,082.86	605,252.59	0.05	68,346.83	536,905.76	
3	16,727,064.94	1.89	16,606,053.51	121,011.43	34,654,890.99	2.83	34,654,890.99	-	
	<u>886,706,262.93</u>	<u>100.00</u>	<u>20,213,239.03</u>	<u>866,493,023.90</u>	<u>1,223,317,252.08</u>	<u>100.00</u>	<u>39,121,439.57</u>	<u>1,184,195,812.51</u>	

:

		%				%		
	251,106,517.05	28.32	27,797.94	251,078,719.11	333,587,549.58	27.27	358,037.08	333,229,512.50
	19,424,817.39	2.19	16,938,527.33	2,486,290.06	37,193,622.22	3.04	34,756,198.85	2,437,423.37
	616,174,928.49	69.49	3,246,913.76	612,928,014.73	852,536,080.28	69.69	4,007,203.64	848,528,876.64
	<u>886,706,262.93</u>	<u>100.00</u>	<u>20,213,239.03</u>	<u>866,493,023.90</u>	<u>1,223,317,252.08</u>	<u>100.00</u>	<u>39,121,439.57</u>	<u>1,184,195,812.51</u>

( )

4.

<u>2008</u>	<u>2007</u>
39,121,439.57	35,267,118.63
875,133.73	1,894,078.42
-	4,883,251.71
-	2,028,707.91
<u>19,783,334.27</u>	<u>894,301.28</u>
<u><u>20,213,239.03</u></u>	<u><u>39,121,439.57</u></u>

251,106,517.05

28.32%

5 ( 5 )

96,124,433.70 ( 4.7530) ( 6.8346)

17,244,358.00 (

5.

	<u>        </u>	<u>        </u>	<u>        </u>	<u>        </u>
		%		%
1	323,129,800.39	100.00	873,872,556.83	99.72
1	<u>-</u>	<u>-</u>	<u>2,445,053.90</u>	<u>0.28</u>
	<u><u>323,129,800.39</u></u>	<u><u>100.00</u></u>	<u><u>876,317,610.73</u></u>	<u><u>100.00</u></u>

2008

( )

5.

243,491,387.66	537,867,155.23
79,638,412.73	338,450,455.50
<u>323,129,800.39</u>	<u>876,317,610.73</u>

5%( 5%)

4,701,782.89 ( 6.8346)

6.

	16,099,235.02	-
	2,000,000.00	8,233,958.21
:	-	6,233,958.21
( )	<u>2,000,000.00</u>	<u>2,000,000.00</u>
	<u>18,099,235.02</u>	<u>8,233,958.21</u>

7.

		%				%		
1	168,476,953.46	74.01	1,441,125.05	167,035,828.41	215,898,872.57	91.50	27,784,885.14	188,113,987.43
1 2	45,855,052.97	20.14	27,791,947.91	18,063,105.06	7,724,831.55	3.27	201,616.00	7,523,215.55
2 3	2,665,501.31	1.17	402,242.00	2,263,259.31	2,665,187.05	1.13	149,800.00	2,515,387.05
3	10,644,604.63	4.68	10,367,250.87	277,353.76	9,671,742.88	4.10	9,612,090.88	59,652.00
	<u>227,642,112.37</u>	<u>100.00</u>	<u>40,002,565.83</u>	<u>187,639,546.54</u>	<u>235,960,634.05</u>	<u>100.00</u>	<u>37,748,392.02</u>	<u>198,212,242.03</u>



( )

8.

198,346,181.52	646,219,165.01
228,021,714.96	151,343,571.57
3,936,054.76	4,732,339.78
18,879,605.17	19,285,618.47
<u>916,369,483.85</u>	<u>1,047,663,671.14</u>
1,365,553,040.26	1,869,244,365.97
<u>197,517,360.38</u>	<u>1,769,160.98</u>
<u>1,168,035,679.88</u>	<u>1,867,475,204.99</u>

1,769,160.98	225,698,865.94	7,203,450.32	39,645,582.40	439,191.48	194,586,703.36
-	<u>1,372,400.33</u>	<u>1,558,256.69</u>	-	-	<u>2,930,657.02</u>
<u>1,769,160.98</u>	<u>227,071,266.27</u>	<u>8,761,707.01</u>	<u>39,645,582.40</u>	<u>439,191.48</u>	<u>197,517,360.38</u>

9.

<u>100,000,000.00</u>	<u>-</u>
-----------------------	----------

6

10.

( 1)  
( 2)

494,534,809.10	1,624,545,984.90
<u>20,503,800.00</u>	<u>-</u>
<u>515,038,609.10</u>	<u>1,624,545,984.90</u>

( )

---

10.

1

2007      2008  
5      15

12

2

3

( )

11.

(1)

		<u>53,398,537.50</u>	<u>232,952,874.14</u>	<u>-</u>	<u>65,974,078.65</u>	<u>-</u>	<u>-</u>	<u>298,926,952.79</u>
	1	2,532,932.06	92,882,970.82	-	(405,754.20)	-	92,477,216.62	-
		3,719,025.00	3,719,025.00	-	-	-	-	3,719,025.00
	2	501,568,229.13	515,416,874.20	22,338,367.99	83,474,010.92	5,544,000.00	-	615,685,253.11
		17,664,163.88	26,821,964.14	-	6,868,334.29	5,813,770.89	-	27,876,527.54
		20,000,000.00	58,552,889.39	-	12,445,657.09	-	-	70,998,546.48
		20,691,250.00	53,802,444.51	-	17,708,158.49	16,099,235.02	-	55,411,367.98
		90,000,000.00	104,162,619.22	-	10,753,862.76	-	-	114,916,481.98
		<u>709,574,137.57</u>	<u>1,088,311,661.42</u>	<u>22,338,367.99</u>	<u>196,818,348.00</u>	<u>27,457,005.91</u>	<u>92,477,216.62</u>	<u>1,187,534,154.88</u>
	3	4,900,000.00	669,194.44	-	-	-	-	669,194.44
	4	1,878,686.12	1,878,686.12	-	-	-	1,878,686.12	-
		5,084,415.00	5,084,415.00	-	-	-	-	5,084,415.00
		682,550.00	682,550.00	-	-	-	-	682,550.00
	( 1)	18,859,704.00	18,859,704.00	-	-	-	18,859,704.00	-
		67,182,012.57	67,182,012.57	-	-	-	-	67,182,012.57
	( 1)	19,490,758.35	19,490,758.35	-	-	-	19,490,758.35	-
( )		2,516,268.80	2,516,268.80	-	-	-	2,516,268.80	-
		20,000,000.00	20,000,000.00	-	-	-	-	20,000,000.00
		4,000,000.00	4,000,000.00	-	-	-	-	4,000,000.00
		500,000.00	500,000.00	-	-	-	-	500,000.00
		<u>145,094,394.84</u>	<u>140,863,589.28</u>	<u>-</u>	<u>-</u>	<u>-</u>	<u>42,745,417.27</u>	<u>98,118,172.01</u>
		<u>854,668,532.41</u>	<u>1,229,175,250.70</u>	<u>22,338,367.99</u>	<u>196,818,348.00</u>	<u>27,457,005.91</u>	<u>135,222,633.89</u>	<u>1,285,652,326.89</u>
			<u>42,609,194.44</u>					<u>31,709,194.44</u>
			<u>1,186,566,056.26</u>					<u>1,253,943,132.45</u>

( )

11. -

(1) -

	669,194.44	-	-	669,194.44
	31,040,000.00	-	-	31,040,000.00
( 1)	10,900,000.00	-	10,900,000.00	-
	<u>42,609,194.44</u>	<u>-</u>	<u>10,900,000.00</u>	<u>31,709,194.44</u>

1

4

4

( )

(

)

(5)(b)

2

(

)

2008

11

4

29.19%

3

4

2008

3

3

189

(2)

	198,000,000.00	29.19%	29.19%	3,219,197,567.96	2,146,539,666.89	3,231,817,415.50	297,322,875.98
	611,000,000.00	25%	25%	2,066,605,466.57	870,506,246.13	843,816,964.88	263,896,314.59
	315,000,000.00	25%	25%	1,416,107,923.87	957,994,997.90	1,569,401,436.73	43,015,451.05
	165,000,000.00	25%	25%	913,667,728.42	694,610,804.07	1,436,869,410.97	70,832,633.96
	100,000,000.00	40%	40%	259,639,728.46	84,367,117.07	90,916,032.00	31,114,142.72
	8,400,000.00	25%	25%	131,521,321.39	20,127,019.59	63,836,353.20	27,473,337.17
	41,461,421.02	25%	25%	41,620,498.48	159,077.46	-	-

2008 12 31

( )

12.

	336,846,523.05	735,282,648.45	1,262,566.01	856,690,917.27	2,008,036,409.64	63,216,715.04	4,001,335,779.46
	(13,794,000.19)	(11,349,176.25)	-	(27,940,695.09)	(45,463,700.84)	(2,280,962.11)	(100,828,534.48)
	314,002,047.90	199,732,252.20	-	-	89,084,439.36	63,607,981.02	666,426,720.48
	51,385,256.14	18,329,364.74	-	267,766,004.62	917,429.81	14,208,022.35	352,606,077.66
	146,280,068.24	164,589,092.35	-	207,580,539.98	461,163,233.27	13,743,096.55	993,356,030.39
	8,031,798.10	7,086,144.65	1,054,171.01	558,000.00	27,810,241.51	4,320,376.09	48,860,731.36
	<u>826,688,097.04</u>	<u>1,099,498,036.84</u>	<u>208,395.00</u>	<u>1,303,538,766.78</u>	<u>2,485,927,569.73</u>	<u>148,174,476.76</u>	<u>5,864,035,342.15</u>
	91,072,021.72	161,362,282.92	872,186.16	334,759,390.47	163,161,504.76	36,332,600.42	787,559,986.45
	(8,641,977.24)	(8,450,787.42)	-	(358,821.66)	(7,008,050.11)	(1,788,980.54)	(26,248,616.97)
	252,224,228.50	172,758,210.30	-	-	73,949,640.08	51,838,383.00	550,770,461.88
	16,496,574.40	63,967,683.83	6,002.00	49,653,444.53	97,544,616.03	13,901,954.91	241,570,275.70
	3,121,045.79	4,035,501.06	671,560.16	302,252.34	10,699,358.79	3,975,887.18	22,805,605.32
	<u>348,029,801.59</u>	<u>385,601,888.57</u>	<u>206,628.00</u>	<u>383,751,761.00</u>	<u>316,948,351.97</u>	<u>96,308,070.61</u>	<u>1,530,846,501.74</u>
	-	-	-	-	-	-	-
	<u>245,774,501.33</u>	<u>573,920,365.53</u>	<u>390,379.85</u>	<u>521,931,526.80</u>	<u>1,844,874,904.88</u>	<u>26,884,114.62</u>	<u>3,213,775,793.01</u>
	<u>478,658,295.45</u>	<u>713,896,148.27</u>	<u>1,767.00</u>	<u>919,787,005.78</u>	<u>2,168,979,217.76</u>	<u>51,866,406.15</u>	<u>4,333,188,840.41</u>

2008 12 31 77,500 ( 58,099 )  
(30) 4,384  
31,628  
( 9,326 )

13.

PVC	524,116,531.67	669,240,684.82	461,163,233.27	732,193,983.22		1,024,921,584.00	68.94%
	121,167,114.01	65,137,233.23	141,035,990.72	45,268,356.52	/	354,626,848.12	52.54%
	182,102,302.89	147,487,332.77	221,543,914.62	108,045,721.04		934,777,300.00	35.26%
	8,530,289.75	83,013,620.79	-	91,543,910.54		165,158,700.00	55.43%
	12,085,104.88	-	12,085,104.88	-		79,195,159.00	100.00%
	1,537,915.09	5,765,637.42	5,441,739.07	1,861,813.44		29,030,150.00	25.16%
	-	9,436,918.38	-	9,436,918.38		80,000,000.00	11.80%
	<u>52,111,123.31</u>	<u>104,835,090.37</u>	<u>152,086,047.83</u>	<u>4,860,165.85</u>			
	<u>901,650,381.60</u>	<u>1,084,916,517.78</u>	<u>993,356,030.39</u>	<u>993,210,868.99</u>			
	-	3,182,575.00	3,182,575.00	-			
	-	-	-	-			
	<u>901,650,381.60</u>			<u>993,210,868.99</u>			

( )

14.

<u>7,781,116.98</u>	<u>108,569,532.85</u>	<u>112,045,892.02</u>	<u>4,304,757.81</u>
---------------------	-----------------------	-----------------------	---------------------

15.

	<u>( 3)</u>	<u>( 3)</u>				
( 1)	4,265,268.83	2,334,507.61	-	-	-	6,599,776.44
( 2)	-	3,944,937.72	507,887,868.15	5,819,411.89	23,518,634.00	482,494,759.98
	<u>4,265,268.83</u>	<u>6,279,445.33</u>	<u>507,887,868.15</u>	<u>5,819,411.89</u>	<u>23,518,634.00</u>	<u>489,094,536.42</u>

1

2

**GMG GLOBAL LTD.**

19,923 11-20

GMG 23,798

2008 12 31

149,267,318.59

4.0%

3

6,279,445.33

507,887,868.15

( )

16.

	( 1 )	( 2 )	( 3 )	( 4 )	( 5 )	( 6 )		
	50-60		66	10-20			5-10	
	154,360,414.66	-	-	335,900.00	-	33,657,714.05	3,981,237.65	192,335,266.36
	17,843,711.47	-	-	52,412,636.83	99,340,250.12	-	13,829,041.66	183,425,640.08
	-	698,691,000.00	26,275,494.42	-	-	-	-	724,966,494.42
	<u>172,204,126.13</u>	<u>698,691,000.00</u>	<u>26,275,494.42</u>	<u>52,748,536.83</u>	<u>99,340,250.12</u>	<u>33,657,714.05</u>	<u>17,810,279.31</u>	<u>1,100,727,400.86</u>
	2,605,338.23	-	-	201,540.00	-	23,659,003.45	1,135,907.75	27,601,789.43
	3,441,444.67	-	491,141.46	2,251,039.86	-	5,311,204.83	1,296,222.46	12,791,053.28
	-	-	4,988,524.83	-	-	-	-	4,988,524.83
	<u>6,046,782.90</u>	<u>-</u>	<u>5,479,666.29</u>	<u>2,452,579.86</u>	<u>-</u>	<u>28,970,208.28</u>	<u>2,432,130.21</u>	<u>45,381,367.54</u>
	-	-	-	-	-	-	-	-
	<u>151,755,076.43</u>	<u>-</u>	<u>-</u>	<u>134,360.00</u>	<u>-</u>	<u>9,998,710.60</u>	<u>2,845,329.90</u>	<u>164,733,476.93</u>
	<u>166,157,343.23</u>	<u>698,691,000.00</u>	<u>20,795,828.13</u>	<u>50,295,956.97</u>	<u>99,340,250.12</u>	<u>4,687,505.77</u>	<u>15,378,149.10</u>	<u>1,055,346,033.32</u>
	40-48		52	8 -19 2			3-8	
1	2008 12 31			45,985,129.66				
		50,000,000.00			(30)		2008 12 31	
			16,666,012.00					
2				GMG GLOBAL LTD.				50
		40,000						
	GMG GLOBAL LTD.					GMG GLOBAL LTD.		
3				GMG GLOBAL LTD.				
		1,511		66				
4				52,412,636.83			20	
5					99,340,250.12			
6		4,687,505.77						



( )

20.

( )

1,586,936,927.29	431,962,341.40
1,071,699,301.39	1,084,084,502.67
-	41,800,000.00
<u>2,658,636,228.68</u>	<u>1,557,846,844.07</u>

344,591,952.63 ( 6.8346)

21.

( 1)

( 2)

295,000.00	7,382,291.17
29,167,000.00	-
<u>29,462,000.00</u>	<u>7,382,291.17</u>

1

2008

2

2008

22.

72,000,000.00	160,000,000.00
59,478,427.27	406,737,187.00
<u>131,478,427.27</u>	<u>566,737,187.00</u>

23.

5%( 5%)

9.6590) 27,530,166.74 ( 6.8346) 3,704,093.16 ( 4.7530) 5,567,997.00 (

( )

24.

5%( 5%)

898,142.66 ( 6.8346)

25.

	67,051,254.72	258,707,797.68	253,268,777.90	72,490,274.50
	6,243,793.93	24,344,826.75	27,577,703.41	3,010,917.27
	317,591.03	37,839,481.31	37,382,587.11	774,485.23
	132,846.52	8,519,556.99	8,477,999.08	174,404.43
	-	23,803,722.04	23,533,135.41	270,586.63
	19,795.26	1,940,549.54	1,957,059.58	3,285.22
	16,982.86	956,138.76	972,559.82	561.80
	5,879.39	662,656.64	667,292.26	1,243.77
	100,883.26	7,117,672.61	7,205,149.89	13,405.98
	3,722,896.46	7,899,592.73	7,334,819.10	4,287,670.09
	-	772,369.01	772,369.01	-
	<u>77,436,419.40</u>	<u>336,681,740.09</u>	<u>333,541,406.42</u>	<u>80,576,753.07</u>

26.

		87,892,020.78	109,055,188.88
		(28,020,545.88)	(91,209,644.93)
		3,964,703.52	3,775,309.80
		9,010,721.08	5,393,427.34
		<u>72,846,899.50</u>	<u>27,014,281.09</u>

27.

		-	19,201,993.98
	( )	-	12,482.44
		<u>-</u>	<u>19,214,476.42</u>



( )



33.

<u>(35,982,849.32)</u>	<u>(43,893,627.41)</u>	<u>(8,995,712.33)</u>	<u>(10,973,406.86)</u>
(230,615,836.11)	(113,022,448.24)	(49,138,542.49)	(28,255,612.06)
(29,462,000.00)	(7,382,291.17)	(5,892,400.00)	(1,845,572.79)
<u>(2,225,297.52)</u>	<u>(21,197,257.68)</u>	<u>(556,324.38)</u>	<u>(5,299,314.42)</u>
<u>(298,285,982.95)</u>	<u>(185,495,624.50)</u>	<u>(64,582,979.20)</u>	<u>(46,373,906.13)</u>

<u>1,150,455,969.44</u>	<u>1,952,424,996.03</u>	<u>284,323,057.50</u>	<u>488,106,249.01</u>
(298,285,982.95)	(185,495,624.50)	(64,582,979.20)	(46,373,906.13)
<u>852,169,986.49</u>	<u>1,766,929,371.53</u>	<u>219,740,078.30</u>	<u>441,732,342.88</u>

<u>76,744,034.89</u>	<u>25,916,305.82</u>
11,115,892.86	-
<u>30,462,776.19</u>	<u>8,225,738.77</u>
<u>118,322,703.94</u>	<u>34,142,044.59</u>

( )

33.

76,744,034.89

2009	596,279.53	596,279.53
2010	6,020,171.65	6,020,171.65
2011	4,536,058.77	4,536,058.77
2012	14,763,795.87	14,763,795.87
2013	50,827,729.07	-
	<u>76,744,034.89</u>	<u>25,916,305.82</u>

34.

1,437,589,571

1

2008	1	1	2008	12	31					
						( )		( )	( )	
			( 1)			<u>616,904,325</u>	-	<u>(616,904,325)</u>	<u>(616,904,325)</u>	-
			( 1)			<u>820,685,246</u>	-	<u>616,904,325</u>	<u>616,904,325</u>	<u>1,437,589,571</u>
						<u>1,437,589,571</u>	-	-	-	<u>1,437,589,571</u>
2007	1	1	2007	12	31					
						( )		( )	( )	
			( 1)			<u>742,673,700</u>	-	<u>(125,769,375)</u>	<u>(125,769,375)</u>	<u>616,904,325</u>
			( 1)			<u>515,020,050</u>	<u>179,895,821</u>	<u>125,769,375</u>	<u>305,665,196</u>	<u>820,685,246</u>
						<u>1,257,693,750</u>	<u>179,895,821</u>	-	<u>179,895,821</u>	<u>1,437,589,571</u>

( )

34.

1  
75,229.17  
2007 12 31  
36  
125,769,375  
2008 8 12  
2007 12 31  
10%

2  
2006 12 1  
18,000  
6.52  
179,895,821

15  
2007 12 11  
2007 12 17  
1,437,589,571

( “06 ” )  
2007 12 17

35.

2008

	1,378,894,660.00	-	-	1,378,894,660.00
	1,396,057,757.63	-	-	1,396,057,757.63
	(17,163,097.63)	-	-	(17,163,097.63)
	1,178,108,015.39	1,949,281.09	847,490,787.95	332,566,508.53
	1,108,776,821.42	-	847,462,118.33	261,314,703.09
	58,351,014.26	-	-	58,351,014.26
	10,980,179.71	1,949,281.09	28,669.62	12,900,791.18
	<u>2,557,002,675.39</u>	<u>1,949,281.09</u>	<u>847,490,787.95</u>	<u>1,711,461,168.53</u>

2007

	317,655,699.40	1,061,238,960.60	-	1,378,894,660.00
( 1 )	321,678,744.17	1,074,379,013.46	-	1,396,057,757.63
( 2 )	(4,023,044.77)	(13,140,052.86)	-	(17,163,097.63)
	239,800,968.69	1,109,666,669.41	171,359,622.71	1,178,108,015.39
	110,198,019.76	-	110,198,019.76	-
	69,253,240.00	1,100,685,184.37	61,161,602.95	1,108,776,821.42
( 3 )	58,351,014.26	-	-	58,351,014.26
	1,998,694.67	8,981,485.04	-	10,980,179.71
	<u>557,456,668.09</u>	<u>2,170,905,630.01</u>	<u>171,359,622.71</u>	<u>2,557,002,675.39</u>

( )

35.

1	2006	12	1	2007
2				
3				

36.

	<u>2008</u>	<u>2007</u>
	414,557,697.08	357,596,263.00
	<u>17,422,023.04</u>	<u>56,961,434.08</u>
	<u><u>431,979,720.12</u></u>	<u><u>414,557,697.08</u></u>

37.

	<u>2008</u>	<u>2007</u>
	1,390,761,980.12	1,007,241,647.50
	705,774,404.35	629,135,829.20
(1)	<u>17,422,023.04</u>	<u>56,961,434.08</u>
	2,079,114,361.43	1,579,416,042.62
(2)	<u>215,638,435.65</u>	<u>188,654,062.50</u>
	<u><u>1,863,475,925.78</u></u>	<u><u>1,390,761,980.12</u></u>

/	(3)	287,517,194.20	215,638,435.65
---	-----	----------------	----------------

(1)

50%

10%

( )

37.

(2)

2008 4 29 1,437,589,571  
( 1 ) 10 1.5

(3)

2008 1,437,589,571 ( 1  
) 10 2

38.

( )	343,869,486.98	282,093,349.06
( )	143,436,927.49	106,749,121.84
	4,188,932.25	4,492,083.44
( )	225,302,115.61	215,574,118.10
	39,886,226.44	39,876,737.04
	11,806,413.72	21,855,112.12
	2,284,821.58	5,292,438.28
	1,010,810.95	850,713.57
	250,258,752.04	90,396,187.50
	3,309,719.58	3,078,618.96
<b>EUROMA RUBBER INDUSTRIES SENDIRIAN BERHAD</b>	<b>4,570,214.06</b>	<b>7,334,796.53</b>

( )

39.

	27,392,124,189.90	19,397,583,084.14
	26,059,325,400.49	18,384,862,184.26
	54,672,177.52	109,985,038.65
	781,771,131.43	589,569,280.67
	496,355,480.46	313,166,580.56
	9,645,920.12	11,976,192.73
	581,847.70	3,609,928.24
	1,412,562.84	2,825,516.00
	4,293,604.91	3,011,894.76
	3,357,904.67	1,231,722.52
	<u>27,401,770,110.02</u>	<u>19,409,559,276.87</u>
	2,923,976,818.98 (	2,106,820,859.10
)	10.67%(	10.9%)

40.

	24,936,566,545.65	17,914,411,778.91
	24,051,041,470.51	17,236,771,609.06
	63,139,963.18	95,938,560.17
	635,061,323.48	467,037,519.78
	187,323,788.48	114,664,089.90
	2,265,640.63	4,024,527.25
	2,072,562.83	1,951,964.41
	193,077.80	2,072,562.84
	<u>24,938,832,186.28</u>	<u>17,918,436,306.16</u>

( )

41.

( )

	<u>35,524,047.43</u>	<u>25,373,405.24</u>
	9,817,784.66	5,650,902.39
	690,328,429.10	110,518,957.91
	<u>5,662,820.72</u>	<u>2,641,363.78</u>
	<u><u>741,333,081.91</u></u>	<u><u>144,184,629.32</u></u>

42.

	<u>244,034,608.70</u>	<u>134,334,474.42</u>
	3,182,575.00	-
	53,032,543.84	12,040,398.90
	(71,583,026.45)	(19,975,102.84)
	<u>30,060,459.02</u>	<u>15,761,583.24</u>
	<u><u>146,296,922.43</u></u>	<u><u>118,080,555.92</u></u>

43.

	<u>3,144,493.19</u>	<u>27,156,918.39</u>
	187,425,683.87	(3,977,139.02)
	-	41,940,000.00
	<u>190,570,177.06</u>	<u>65,119,779.37</u>

44.

/

	<u><u>48,317,178.56</u></u>	<u><u>13,125,607.97</u></u>
--	-----------------------------	-----------------------------

( )

45.

		<u>191,368,389.04</u>	<u>154,980,610.04</u>
		7,855,014.46	18,185,684.64
	/ ( )	195,864,648.82	136,713,527.25
	/	(12,351,274.24)	81,398.15
	/	90,702,541.81	(14,748,732.97)
	/	4,126,633.82	171,279,025.38
		25,820,389.75	-
		6,682,337.49	319,772.69
		<u>318,700,291.91</u>	<u>311,830,675.14</u>
	/		

	<u>83,474,010.92</u>	<u>13,848,645.07</u>
	65,974,078.65	76,801,217.48
	17,708,158.49	7,324,084.32
	12,445,657.09	8,570,173.75
	16,262,743.67	30,169,406.63
	<u>195,864,648.82</u>	<u>136,713,527.25</u>

46.

( 1)	<u>99,586,486.65</u>	<u>4,464,167.21</u>
	6,359,079.22	59,937,484.91
( 2)	14,687,825.61	12,670,294.26
	46,202,605.84	10,018,988.42
	<u>166,835,997.32</u>	<u>87,090,934.80</u>

1

2 (49)



( )

49.

		<u>14,687,825.61</u>	<u>12,670,294.26</u>
( )		<u>14,687,825.61</u>	<u>12,670,294.26</u>
			6,318,000.00
( )			
3,046,839.00			
2,174,200.00			

50.

		<u>705,774,404.35</u>	<u>629,135,829.20</u>
		<u>1,437,589,571.00</u>	<u>1,257,693,750.00</u>
( )		<u>-</u>	<u>7,495,659.21</u>
		<u>1,437,589,571.00</u>	<u>1,265,189,409.21</u>
		1,437,589,571.00	1,265,189,409.21
		-	107,255,873.54
		-	107,255,873.54
		<u>1,437,589,571.00</u>	<u>1,372,445,282.75</u>

2007 12 17  
1,437,589,571

179,895,821

( )

51.

	<u>3,182,575.00</u>	8.514%
	<u>240,852,033.70</u>	
	<u><u>244,034,608.70</u></u>	

52.

	<u>705,774,404.35</u>	<u>629,135,829.20</u>
/		
-	10,099,787.06	(57,977,195.09)
-	(14,687,825.61)	(12,670,294.26)
-		
	(143,146,354.19)	(169,655,900.38)
-	(6,682,337.49)	-
-	(136,448,999.19)	(7,788,719.33)
	50,910,452.78	47,940,377.83
	<u>6,994,604.62</u>	<u>3,837,997.05</u>
	<u><u>472,813,732.33</u></u>	<u><u>432,822,095.02</u></u>

53.

	<u>3,026,926,487.88</u>	<u>2,021,468,232.76</u>
	2,060,163.86	187,780.29
	<u>3,024,309,776.41</u>	<u>2,021,280,452.47</u>
	556,547.61	-
	<u><u>3,026,926,487.88</u></u>	<u><u>2,021,468,232.76</u></u>
	<u><u>461,737,343.13</u></u>	<u><u>192,000,000.00</u></u>

( )

54.

(1)		<u>884,241,035.40</u>	<u>769,975,127.32</u>
		190,570,177.06	65,119,779.37
		247,389,687.59	192,787,947.96
		12,791,053.28	8,882,068.20
		181,073.44	1,063,958.25
	( )	(2,251,487.19)	(57,895,796.94)
	( )	(48,317,178.56)	(13,125,607.97)
		229,283,426.75	134,334,474.42
	( )	(318,700,291.91)	(311,830,675.14)
	( )	55,859,921.88	13,626,791.01
	( )	664,619,994.88	(610,555,965.91)
	( )	1,215,019,462.68	(354,334,109.66)
	( )	(1,449,986,244.02)	784,865,006.42
		<u>1,680,700,631.28</u>	<u>622,912,997.33</u>
(2)	( )	134,060,080.00	-
(3)		<u>3,026,926,487.88</u>	<u>2,021,468,232.76</u>
		2,021,468,232.76	805,766,528.27
		<u>1,005,458,255.12</u>	<u>1,215,701,704.49</u>
	( )		

55.

		<u>53,032,543.84</u>	<u>12,040,398.90</u>
		99,586,486.65	3,590,113.72
		144,544,675.95	126,396,624.75
		<u>297,163,706.44</u>	<u>142,027,137.37</u>
		345,888,172.88	325,402,968.24
		80,119,761.21	70,932,381.84
		<u>426,007,934.09</u>	<u>396,335,350.08</u>

( )

56.

\_\_\_\_\_

\_\_\_\_\_

\_\_\_\_\_

- 10,000,000.00

20,000,000.00 -

20,000,000.00 10,000,000.00

57.

\_\_\_\_\_

\_\_\_\_\_

\_\_\_\_\_

- 151,157,199.04

- 150,000,000.00

58.

( )

2008

(1)

( )

58.

( )

(2)

		2007 12 31	
614,835,041.65	628,313,915.89	522,416,084.87	554,132,872.09
<u>1,347,673,357.74</u>	<u>1,347,673,357.74</u>	<u>1,421,373,917.56</u>	<u>1,421,373,917.56</u>
<u>1,962,508,399.39</u>	<u>1,975,987,273.63</u>	<u>1,943,790,002.43</u>	<u>1,975,506,789.65</u>
279,487,002.38	279,487,002.38	215,333,283.16	215,333,283.16
<u>96,455,189.42</u>	<u>96,455,189.42</u>	<u>163,617,223.53</u>	<u>163,617,223.53</u>
<u>375,942,191.80</u>	<u>375,942,191.80</u>	<u>378,950,506.69</u>	<u>378,950,506.69</u>
<u>1,586,566,207.59</u>	<u>1,600,045,081.83</u>	<u>1,564,839,495.74</u>	<u>1,596,556,282.96</u>
	<u>879,613,600.16</u>		
	<u>720,431,481.67</u>		
	<u>560,007,219.57</u>		
	<u>1,280,438,701.24</u>		

SINOCHEM INTERNATIONAL

(OVERSEAS) PTE LTD 2.6798 (

12.8 ) GMG GLOBAL LTD. 51%

2007 12 31

GMG GLOBAL LTD.

1,280,438,701.24

1,280,438,701.24

193,940,354.88

1,086,498,346.36

( )

---

58.

( )

-

2008

-

(3)

---

396,672,248.90  
300,986,413.86  
95,685,835.04  
73,983,166.32  
189,065,545.49  
(23,096,031.67)  
(16,132,914.85)  
150,947,624.87

\_\_\_\_\_ ( ) \_\_\_\_\_

59.

(1)

\_\_\_\_\_ ( ) \_\_\_\_\_

(1)

_____	_____	_____	_____	_____	_____	_____
		100000411			1,016,605	55.76% 55.76%
		A2				

(2)

_____	_____	_____	_____
	934,156.48	82,448.52	1,016,605.00

(3)

(4)

_____	_____
( )	
( )	
( )	
( )	/



( )

(5)

(b) -

-	( )		<u>25,768,918.64</u>	<u>20,483,965.32</u>
-			705,196.57	-
			<u>26,474,115.21</u>	<u>20,483,965.32</u>
-	( 1)		2,852,488.13	-
-	( 2)		-	30,000,000.00
-	( 3)		-	24,280,000.00
			<u>2,852,488.13</u>	<u>54,280,000.00</u>
1	285			
	6.38%			
2	3,000			
	20.69%			
3	2,428			
	1.57%			
-		( 1)	110,154,011.00	-
-	( 2)		-	1.00
			<u>110,154,011.00</u>	<u>1.00</u>
1	4		110,154,011.00	
				4
	( )			
	(11)	( )		
2				1

( )

(5)

(c)

( )

( )

358,129.00	265,843.04
<u>1,782,510.16</u>	<u>50,425,361.98</u>
<u>2,140,639.16</u>	<u>50,691,205.02</u>
6,216,765.24	5,423,428.89
<u>111,072.75</u>	<u>3,889,125.05</u>
<u>6,327,837.99</u>	<u>9,312,553.94</u>
24,885,225.84	1,813,939.78
828,000.00	-
<u>757,536.00</u>	<u>1,321,257.16</u>
<u>26,470,761.84</u>	<u>3,135,196.94</u>
674,494.23	674,494.23
<u>1,224,442.60</u>	<u>1,224,442.60</u>
<u>1,898,936.83</u>	<u>1,898,936.83</u>
20,000,000.00	-
<u>2,192,825.29</u>	<u>9,557,408.91</u>
<u>22,192,825.29</u>	<u>9,557,408.91</u>
-	137,505,985.36
-	20,000,000.00
<u>5,704,781.75</u>	<u>30,869.70</u>
<u>5,704,781.75</u>	<u>157,536,855.06</u>

( )

( )

1.

		%				%		
1	454,638,030.35	95.26	1,745,396.08	452,892,634.27	516,649,625.00	94.06	1,107,791.45	515,541,833.55
1 2	2,329,626.45	0.49	232,962.65	2,096,663.80	379,610.25	0.07	32,961.02	346,649.23
2 3	120,103.57	0.03	24,020.71	96,082.86	798,058.47	0.14	57,532.37	740,526.10
3	20,117,312.12	4.22	16,584,424.59	3,532,887.53	31,447,193.70	5.73	31,447,193.70	-
	<u>477,205,072.49</u>	<u>100.00</u>	<u>18,586,804.03</u>	<u>458,618,268.46</u>	<u>549,274,487.42</u>	<u>100.00</u>	<u>32,645,478.54</u>	<u>516,629,008.88</u>

:

		%				%		
	159,392,891.79	33.40	954,674.93	158,438,216.86	213,872,260.21	38.94	358,037.08	213,514,223.13
	22,567,042.14	4.73	16,841,407.95	5,725,634.19	32,624,862.42	5.94	31,537,687.09	1,087,175.33
	<u>295,245,138.56</u>	<u>61.87</u>	<u>790,721.15</u>	<u>294,454,417.41</u>	<u>302,777,364.79</u>	<u>55.12</u>	<u>749,754.37</u>	<u>302,027,610.42</u>
	<u>477,205,072.49</u>	<u>100.00</u>	<u>18,586,804.03</u>	<u>458,618,268.46</u>	<u>549,274,487.42</u>	<u>100.00</u>	<u>32,645,478.54</u>	<u>516,629,008.88</u>

2008

2007

32,645,478.54	34,572,086.44
841,408.05	-
-	1,926,607.90
<u>14,900,082.56</u>	<u>-</u>
<u>18,586,804.03</u>	<u>32,645,478.54</u>

159,392,891.79

1

33.40%

5 ( 5 )

56,301,172.45 ( 6.8346)

( )

2.

		%				%		
1	112,923,506.67	61.05	266,155.14	112,657,351.53	242,553,781.86	79.76	27,752,935.15	214,800,846.71
1 2	43,287,102.97	23.40	27,759,997.91	15,527,105.06	3,904,342.08	1.28	201,616.00	3,702,726.08
2 3	2,663,071.31	1.44	402,242.00	2,260,829.31	41,350,960.77	13.60	149,800.00	41,201,160.77
3	26,087,004.74	14.11	9,757,809.05	16,329,195.69	16,299,432.30	5.36	9,002,649.05	7,296,783.25
	<u>184,960,685.69</u>	<u>100.00</u>	<u>38,186,204.10</u>	<u>146,774,481.59</u>	<u>304,108,517.01</u>	<u>100.00</u>	<u>37,107,000.20</u>	<u>267,001,516.81</u>

:

		%				%		
	129,833,815.65	70.20	36,802,480.69	93,031,334.96	257,665,084.09	84.73	27,719,421.40	229,945,662.69
	21,387,579.99	11.56	1,117,568.27	20,270,011.72	19,902,757.53	6.54	9,354,065.04	10,548,692.49
	<u>33,739,290.05</u>	<u>18.24</u>	<u>266,155.14</u>	<u>33,473,134.91</u>	<u>26,540,675.39</u>	<u>8.73</u>	<u>33,513.76</u>	<u>26,507,161.63</u>
	<u>184,960,685.69</u>	<u>100.00</u>	<u>38,186,204.10</u>	<u>146,774,481.59</u>	<u>304,108,517.01</u>	<u>100.00</u>	<u>37,107,000.20</u>	<u>267,001,516.81</u>

2008

2007

37,107,000.20	10,405,355.11
1,079,203.90	27,719,421.40
-	1,017,776.31
<u>38,186,204.10</u>	<u>37,107,000.20</u>

129,833,815.65

70.20%

5 ( 5 )

343,846.81 ( 6.8346)

( )

3.

198,346,181.52	646,219,165.01
618,302,836.00	754,088,597.61
<u>816,649,017.52</u>	<u>1,400,307,762.62</u>
<u>142,802,828.00</u>	<u>1,329,969.50</u>
<u>673,846,189.52</u>	<u>1,398,977,793.12</u>

<u>1,329,969.50</u>	<u>170,308,330.75</u>	<u>28,835,472.25</u>	<u>142,802,828.00</u>
<u>1,329,969.50</u>	<u>170,308,330.75</u>	<u>28,835,472.25</u>	<u>142,802,828.00</u>

4.

(1)

( )	105,586,705.97	105,586,705.97	-	-	-	-	-	105,586,705.97
( )	31,038,483.27	31,038,483.27	-	-	-	-	-	31,038,483.27
	76,475,509.52	78,304,990.59	-	-	-	-	-	78,304,990.59
	231,800,000.00	1,791,080,000.00	-	-	-	-	-	1,791,080,000.00
	22,000,000.00	22,000,000.00	2,852,488.13	-	-	-	-	24,852,488.13
	475,000.00	475,000.00	-	-	-	-	-	475,000.00
SINOCHEM INTERNATIONAL FZE	6,759,079.86	6,759,079.86	-	-	-	-	6,759,079.86	-
SINOCHEM INTERNATIONAL	49,664,400.00	49,664,400.00	-	-	-	-	-	49,664,400.00
(OVERSEAS) PTE. LTD.	24,300,000.00	504,300,000.00	-	-	-	-	-	504,300,000.00
( )	75,750,000.00	151,500,000.00	-	-	-	-	-	151,500,000.00
	27,000,000.00	27,000,000.00	60,000,000.00	-	-	-	-	87,000,000.00
	28,196,983.47	28,196,983.47	-	-	-	-	-	28,196,983.47
	12,000,000.00	60,000,000.00	-	-	-	-	-	60,000,000.00
	36,000,000.00	36,000,000.00	-	-	-	-	-	36,000,000.00
	1,530,000.00	-	1,530,000.00	-	-	-	-	1,530,000.00
	<u>728,576,162.09</u>	<u>2,891,905,643.16</u>	<u>64,382,488.13</u>	-	-	-	<u>6,759,079.86</u>	<u>2,949,529,051.43</u>
	53,398,537.50	232,952,874.14	-	65,974,078.65	-	-	-	298,926,952.79
( )	( 1) 2,532,932.06	92,882,970.82	-	(405,754.20)	-	-	92,477,216.62	-
	3,719,025.00	3,719,025.00	-	-	-	-	-	3,719,025.00
( 2)	501,568,229.13	515,416,874.20	22,338,367.99	83,474,010.92	5,544,000.00	-	-	615,685,253.11
	<u>561,218,723.69</u>	<u>844,971,744.16</u>	<u>22,338,367.99</u>	<u>149,042,335.37</u>	<u>5,544,000.00</u>	-	<u>92,477,216.62</u>	<u>918,331,230.90</u>

( )

4.

(1)

—

—

—

( 3 )	1,878,686.12	1,878,686.12	-	-	-	1,878,686.12	-
	682,550.00	682,550.00	-	-	-	-	682,550.00
( 1 )	18,859,704.00	18,859,704.00	-	-	-	18,859,704.00	-
	67,182,012.57	67,182,012.57	-	-	-	-	67,182,012.57
( 1 )	19,490,758.35	19,490,758.35	-	-	-	19,490,758.35	-
( ( 1 ) )	2,516,268.80	2,516,268.80	-	-	-	2,516,268.80	-
	500,000.00	500,000.00	-	-	-	-	500,000.00
	20,000,000.00	20,000,000.00	-	-	-	-	20,000,000.00
	4,000,000.00	4,000,000.00	-	-	-	-	4,000,000.00
	<u>135,109,979.84</u>	<u>135,109,979.84</u>	-	-	-	<u>42,745,417.27</u>	<u>92,364,562.57</u>
	<u>1,424,904,865.62</u>	<u>3,871,987,367.16</u>	<u>86,720,856.12</u>	<u>149,042,335.37</u>	<u>5,544,000.00</u>	<u>141,981,713.75</u>	<u>3,960,224,844.90</u>
	-	(41,940,000.00)	-	-	-	-	(31,040,000.00)
	<u>1,424,904,865.62</u>	<u>3,830,047,367.16</u>	-	-	-	-	<u>3,929,184,844.90</u>

31,040,000.00	-	-	31,040,000.00
10,900,000.00	-	10,900,000.00	-
<u>41,940,000.00</u>	-	<u>10,900,000.00</u>	<u>31,040,000.00</u>

1

4

4

( )

(

)

(5)(b)

2

(

)

2008 11

29.19%

3

2008 3 3

189

(2)

198,000,000.00	29.19%	29.19%	3,219,197,567.96	2,146,539,666.89	3,231,817,415.50	297,322,875.98
611,000,000.00	25%	25%	2,066,605,466.57	870,506,246.13	843,816,964.88	263,896,314.59
41,461,421.02	25%	25%	41,620,498.48	159,077.46	-	-

( )

-

5.

	7,621,908.00	5,612,015.60	13,300,361.07	21,932,212.50	48,466,497.17
	-	849,500.00	3,482,724.66	4,804,713.19	9,136,937.85
	<u>7,621,908.00</u>	<u>-</u>	<u>3,203,640.80</u>	<u>636,332.00</u>	<u>11,461,880.80</u>
	<u>-</u>	<u>6,461,515.60</u>	<u>13,579,444.93</u>	<u>26,100,593.69</u>	<u>46,141,554.22</u>
	2,874,730.06	4,924,428.42	5,411,607.92	11,813,750.32	25,024,516.72
	143,757.66	280,106.67	1,679,485.58	5,423,739.05	7,527,088.96
	<u>3,018,487.72</u>	<u>-</u>	<u>1,727,242.23</u>	<u>580,268.19</u>	<u>5,325,998.14</u>
	<u>-</u>	<u>5,204,535.09</u>	<u>5,363,851.27</u>	<u>16,657,221.18</u>	<u>27,225,607.54</u>
	-	-	-	-	-
	<u>4,747,177.94</u>	<u>687,587.18</u>	<u>7,888,753.15</u>	<u>10,118,462.18</u>	<u>23,441,980.45</u>
	<u>-</u>	<u>1,256,980.51</u>	<u>8,215,593.66</u>	<u>9,443,372.51</u>	<u>18,915,946.68</u>

6.

	( 1 )	( 2 )		
	20		5-10	
	-	33,657,714.05	-	33,657,714.05
( )	<u>52,412,636.83</u>	<u>-</u>	<u>12,376,441.66</u>	<u>64,789,078.49</u>
	<u>52,412,636.83</u>	<u>33,657,714.05</u>	<u>12,376,441.66</u>	<u>98,446,792.54</u>
	-	23,659,003.45	-	23,659,003.45
	<u>2,183,859.86</u>	<u>5,311,204.83</u>	<u>406,368.71</u>	<u>7,901,433.40</u>
	<u>2,183,859.86</u>	<u>28,970,208.28</u>	<u>406,368.71</u>	<u>31,560,436.85</u>
	-	-	-	-
	<u>-</u>	<u>9,998,710.60</u>	<u>-</u>	<u>9,998,710.60</u>
	<u>50,228,776.97</u>	<u>4,687,505.77</u>	<u>11,970,072.95</u>	<u>66,886,355.69</u>

( )

6. -

1 52,412,636.83

2 4,687,505.77

7.

69,752,478.74	1,920,611.95	-	14,900,082.56	56,773,008.13
1,329,969.50	170,308,330.75	28,835,472.25	-	142,802,828.00
<u>41,940,000.00</u>	<u>-</u>	<u>-</u>	<u>10,900,000.00</u>	<u>31,040,000.00</u>
<u>113,022,448.24</u>	<u>172,228,942.70</u>	<u>28,835,472.25</u>	<u>25,800,082.56</u>	<u>230,615,836.13</u>

8.

146,092,000.00	146,092,000.00
1,071,699,301.39	471,098,738.52
-	26,800,000.00
<u>1,217,791,301.39</u>	<u>643,990,738.52</u>

178,180,332.63 ( 6.8346)

9.

88,927,981.32	109,613,182.13	22,231,995.33	27,403,295.53
8,184,000.00	11,559,549.14	1,636,800.00	2,889,887.29
<u>348,419,604.17</u>	<u>1,478,369,095.25</u>	<u>87,104,901.04</u>	<u>369,592,273.81</u>
<u>445,531,585.49</u>	<u>1,599,541,826.52</u>	<u>110,973,696.37</u>	<u>399,885,456.63</u>

( )

-

9.

-

(230,615,836.11)	(113,022,448.24)	(49,138,542.49)	(28,255,612.06)
(6,128,400.00)	(7,382,291.17)	(5,892,400.00)	(1,845,572.79)
(35,982,849.31)	(43,893,627.41)	(8,995,712.33)	(10,973,406.86)
<u>(272,727,085.42)</u>	<u>(164,298,366.82)</u>	<u>(64,026,654.82)</u>	<u>(41,074,591.71)</u>

/

445,531,585.49	1,599,541,826.52	110,973,696.37	399,885,456.63
<u>(272,727,085.42)</u>	<u>(164,298,366.82)</u>	<u>(64,026,654.82)</u>	<u>(41,074,591.71)</u>
<u>172,804,500.07</u>	<u>1,435,243,459.70</u>	<u>46,947,041.55</u>	<u>358,810,864.92</u>

10.

(34)

( )

11.

2008

		1,384,632,454.29	-	-	1,384,632,454.29
( 1)		1,396,057,757.63	-	-	1,396,057,757.63
		(11,425,303.34)	-	-	(11,425,303.34)
		1,162,957,057.94	2,488.13	847,490,787.95	315,468,758.12
( 2)		1,108,776,821.42	-	847,462,118.33	261,314,703.09
		53,329,470.15	-	-	53,329,470.15
		850,766.37	2,488.13	28,669.62	824,584.88
		<u>2,547,589,512.23</u>	<u>2,488.13</u>	<u>847,490,787.95</u>	<u>1,700,101,212.41</u>

2007

		310,253,440.83	1,074,379,013.46	-	1,384,632,454.29
( 1)		321,678,744.17	1,074,379,013.46	-	1,396,057,757.63
		(11,425,303.34)	-	-	(11,425,303.34)
		233,602,826.65	1,100,713,854.00	171,359,622.71	1,162,957,057.94
( 2)		110,198,019.76	-	110,198,019.76	-
		69,253,240.00	1,100,685,184.37	61,161,602.95	1,108,776,821.42
		53,329,470.15	-	-	53,329,470.15
		822,096.74	28,669.63	-	850,766.37
		<u>543,856,267.48</u>	<u>2,175,092,867.46</u>	<u>171,359,622.71</u>	<u>2,547,589,512.23</u>

1 2006 12 1  
2

2007

12.

2008

2007

414,557,697.08

357,596,263.00

17,422,023.04

56,961,434.08

431,979,720.12

414,557,697.08

( )

-

13.

		<u>2008</u>	<u>2007</u>
		<u>427,276,776.47</u>	<u>103,277,932.24</u>
		174,220,230.39	569,614,340.81
	(1)	17,422,023.04	56,961,434.08
		584,074,983.82	615,930,838.97
	(2)	<u>215,638,435.65</u>	<u>188,654,062.50</u>
		<u>368,436,548.17</u>	<u>427,276,776.47</u>
	(3)	287,517,194.20	215,638,435.65

(1)

50%

10%

(2)

( 2008 4 29  
1 )

10

1,437,589,571  
1.5

(3)

) 2008  
10

1,437,589,571 ( 1  
2



( )

-

17.

		<u>1,692,159,026.95</u>	<u>920,964,007.74</u>
		56,794.17	24,376.12
		<u>1,691,545,685.17</u>	<u>920,939,631.62</u>
		556,547.61	-
		<u>1,692,159,026.95</u>	<u>920,964,007.74</u>
	( )	<u>281,737,343.13</u>	<u>-</u>

281,690,534.19 ( 0 ) 6,848.82 ( 0 )

18.

(1)

		174,220,230.39	569,614,340.81
		143,393,470.45	62,298,706.69
		7,527,088.96	6,838,481.04
		7,901,433.40	5,794,041.66
		-	872,344.59
	( )	(2,546,622.78)	-
	( )	25,455,257.97	(13,125,607.97)
		86,145,855.45	78,329,980.67
	( )	(306,527,671.29)	(644,504,356.06)
	( )	(29,314,765.89)	(31,938,622.74)
	( )	583,658,745.10	(340,425,158.63)
	( )	849,538,892.53	153,762,607.97
	( )	(1,132,556,146.72)	683,221,785.24
		<u>406,895,767.57</u>	<u>530,738,543.27</u>

(2)

	1,692,159,026.95	920,964,007.74
	<u>920,964,007.74</u>	<u>464,080,372.38</u>
	<u>771,195,019.21</u>	<u>456,883,635.36</u>

( )

-

19.

	-	10,000,000.00
	<u>20,000,000.00</u>	<u>-</u>
	<u>20,000,000.00</u>	<u>10,000,000.00</u>

20.

(a)

SINOCHEM INTERNATIONAL (OVERSEAS) PTE. LTD	1,621,726,565.72	898,614,408.91
	5,641.03	84,728.00
	47,763,183.64	8,315,993.60
( )	1,093,743.60	1,290,871.80
	244,194,374.75	222,490,335.04
	85,587,019.98	-
( )	11,497,726.33	15,535,339.34
	1,471,209.55	6,745,079.49
	17,585,675.88	20,579,630.64
	<u>2,030,925,140.48</u>	<u>1,173,656,386.82</u>

( )		
	-	
20.	-	
(a)	-	
		_____
		_____
SINOCHEM INTERNATIONAL (OVERSEAS) PTE. LTD	2,512,711,910.57	457,280,401.06
	71,630,638.42	14,301,447.16
	335,733,960.89	308,688,817.65
	70,947,832.49	112,214,374.92
	1,582,981.02	3,310,073.47
( )	267,442,712.14	244,472,632.13
	1,040,929,904.85	931,155,835.08
	88,725,223.05	-
	567,888,571.43	446,296,027.19
	150,526,142.89	3,199,561.78
	732,743.36	-
	<u>67,111,951.66</u>	<u>12,582,759.67</u>
	<u>5,175,964,572.77</u>	<u>2,533,501,930.11</u>
(b)		
		_____
		_____
-	-	669,831.82
-SINOCHEM INTERNATIONAL FZE	878,749.93	876,376.69
-	21,496,721.47	17,536,014.85
	<u>22,375,471.40</u>	<u>19,082,223.36</u>
-	25,768,918.64	20,483,965.32
( )	705,196.57	-
-	<u>26,474,115.21</u>	<u>20,483,965.32</u>
-SINOCHEM INTERNATIONAL FZE	USD5,110,000.00	-
-SINOCHEM INTERNATIONAL (OVERSEAS) PTE. LTD	<u>USD123,000,000.00</u>	<u>USD65,350,000.00</u>
	<u>USD128,110,000.00</u>	<u>USD65,350,000.00</u>

		( )			
20.					
(b)	-				
	-SINOCHEM INTERNATIONAL (OVERSEAS) PTE. LTD			51,000,000.00	-
	-SINOCHEM INTERNATIONAL (OVERSEAS) PTE. LTD			USD 190,000,000.00	-
	-			220,000,000.00	-
				2.2	
		2008	12	31	
	1.7				
	-			( 1)	-
	-	( 2)			24,280,000.00
					2,852,488.13
					2,852,488.13
					24,280,000.00
	1	( )			2,428
					1.57%
	2	( )			285
					6.38%
	-			( 1)	110,154,011.00
	-	( 2)			-
					110,154,011.00
					1.00
					1.00

( )

-

20.

-

(b) -

1

4

110,154,011.00

4

( )

( )

(11)

2

1

2008 12 31

5,000

5,000

8,000

(c)

SINOCHEM INTERNATIONAL  
(OVERSEAS) PTE. ,LTD.  
SINOCHEM INTERNATIONAL FZE

212,321,814.77  
3,444,319.48

74,873,986.47  
3,444,319.48  
14,888.00

SHDH @ MA

( )

20.

(c)

SINOCEM INTERNATIONAL  
(OVERSEAS) PTE., LTD.  
SINOCEM INTERNATIONAL FZE

( )

SINOCEM INTERNATIONAL  
(OVERSEAS) PTE., LTD.  
SINOCEM INTERNATIONAL FZE

SINOCEM INTERNATIONAL  
(OVERSEAS) PTE., LTD.

( )

SINOCEM INTERNATIONAL  
(OVERSEAS) PTE., LTD.

	19,653,180.81	22,007,310.69
	488,476,130.52	229,125,242.46
	15,801,107.23	15,801,107.23
	178,685.00	-
	1,611,346.69	2,282,760.82
	15,072,008.55	71,490.75
	54,195,833.54	111,110,076.00
	828,000.00	-
	24,885,225.84	1,813,939.78
	403,093.71	1,309,202.82
	<u>621,104,611.89</u>	<u>383,521,130.55</u>
	4,444,169.97	3,977,895.92
	426,548,192.25	507,052,188.52
	1,464,075.59	1,464,075.59
	231,172,000.00	289,593,834.47
	532,439.20	31,558,227.70
	-	111,358.15
	28,857.00	2,417,704.00
	-	471,063.34
	674,494.23	674,494.23
	1,224,442.60	1,224,442.60
	<u>666,088,670.84</u>	<u>838,545,284.52</u>
	-	11,919,003.69
	-	23,339.73
	19,476,505.49	29,073,583.75
	51,469,819.72	70,000,000.00
	-	25,797,504.39
	82,305,716.45	198,141,884.54
	6,661,997.37	12,195,538.00
	-	20,000,000.00
	-	137,505,985.36
	2,198,578.80	-
	<u>162,112,617.83</u>	<u>504,656,839.46</u>
	-	228,965.80
	7,650,000.00	-
	20,000,000.00	-
	56,387.20	19,706.94
	<u>27,706,387.20</u>	<u>248,672.74</u>

\_\_\_\_\_  
( )

20.

(c)

SINOCHEM INTERNATIONAL FZE

( )

-	118,081,128.24
-	218,324,080.05
<u>10,600,100.00</u>	<u>6,557,300.00</u>
<u>10,600,100.00</u>	<u>342,962,508.29</u>
28,550,000.00	8,000,000.00
1,206,000.00	-
-	<u>1,394,028.00</u>
<u>29,756,000.00</u>	<u>9,394,028.00</u>
-	10,000,000.00
-	<u>100,000,000.00</u>
-	<u>110,000,000.00</u>

1.

(    )          

-

1.

-

  1.1          

  1.1.1.

\_\_\_\_\_ ( ) \_\_\_\_\_

-

1.

-

1.2. \_\_\_\_\_

2008 12 31

•

•

2.2  
2.2

2008 12 31

28.32%

1.3. \_\_\_\_\_

( )

1.

1.3.

2008 12 31			
2,658.64	274.90	-	2,933.54
-	1,651.80	1,111.07	2,762.87
-	339.36	-	339.36
<u>2,658.64</u>	<u>2,266.06</u>	<u>1,111.07</u>	<u>6,035.77</u>

2007 12 31			
1,557.85	32.63	-	1,590.48
-	338.08	1,090.39	1,428.47
-	184.30	-	184.30
<u>1,557.85</u>	<u>555.01</u>	<u>1,090.39</u>	<u>3,203.25</u>

2.

( )

,

3.

( )

-

1. -

3. -

3.1.

2008 12 31

( )10% ( )  
329,111,984.03 ( 186,525,417.68 ) ( )

3.2.

2008 12 31

( )10% ( )  
5,303,254.38 ( 1,204,039.89 )

2008 12 31

( )10% ( )  
20,174,940.79 ( 13,433,447.44 )

3.3.

2008 12 31

( )10% ( ) 49,453,480.91  
( 162,454,598.49 )

2008 12 31

( )10% ( )  
3,237,009.04 ( 13,304,955.80 )

(1)

-

\_\_\_\_\_ \_\_\_\_\_  
402,253 1,260,546



( )

2008

( )

( )

09 -

(2007 )

2008

		13.23%	8.86%
		11.82%	7.92%
( )		0.49	0.33
		0.49	0.33

2007

		10.95%	7.53%
		18.50%	12.73%
( )		0.50	0.34
		0.46	0.32

:

:

:

2009 4 11

( )

---

1 2008

2 2008

3

4

2008 4 11

( )

---

中化国际（控股）股份有限公司董事会  
关于公司内部控制的自我评估报告

( )

---

2008

( )

---

1

2

09

( )

4

( )

---

COBIT

09

IT

( )

---

2009 4 9

( )

---

“ ” “ ” “ ” “ ”

”

2005

A

2006

2007

2008

( )

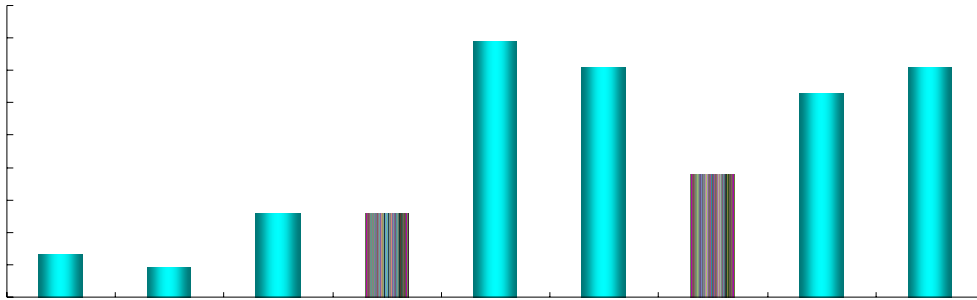
---

18

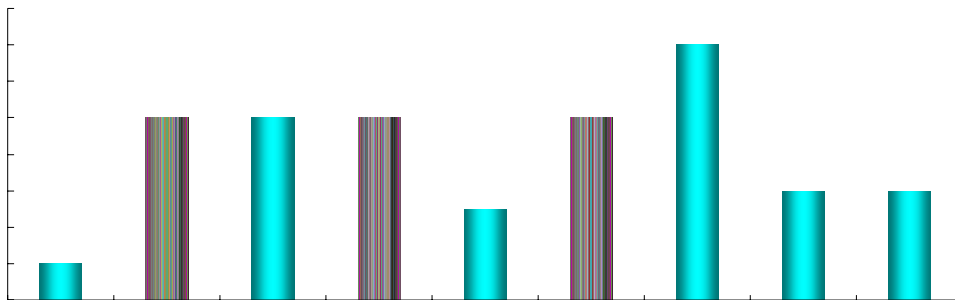
500

2008

257



	2001	2002	2003	2004	2005	2006	2007	2008
	656,716	800,314	1,098,100	1,300,618	1,591,139	1,545,903	1,940,956	2,740,177
	11,371	33,059	33,784	101,353	84,545	53,182	92,832	103,011
	9,052	26,026	26,193	79,770	71,148	36,147	62,914	70,577
	252,824	308,434	327,477	533,172	636,240	801,898	1,366,327	1,556,396
	153,568	170,292	182,658	258,916	309,547	381,544	574,531	533,350



( )

---

( )


( )



( )

( )

---

“

”

\_\_\_\_\_ ( ) \_\_\_\_\_


“ ”

“ ”

( )

00